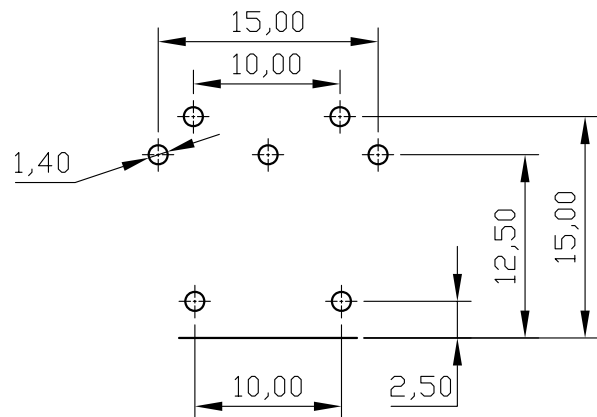
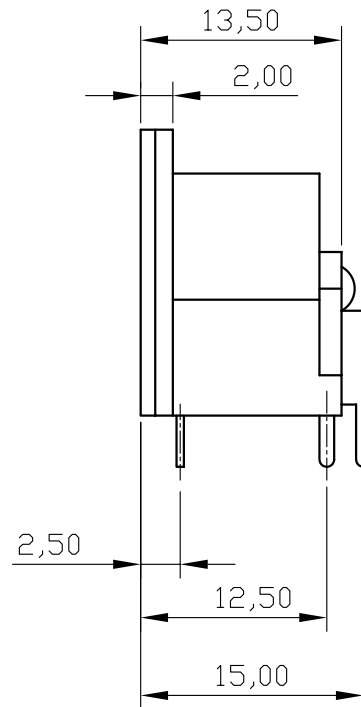
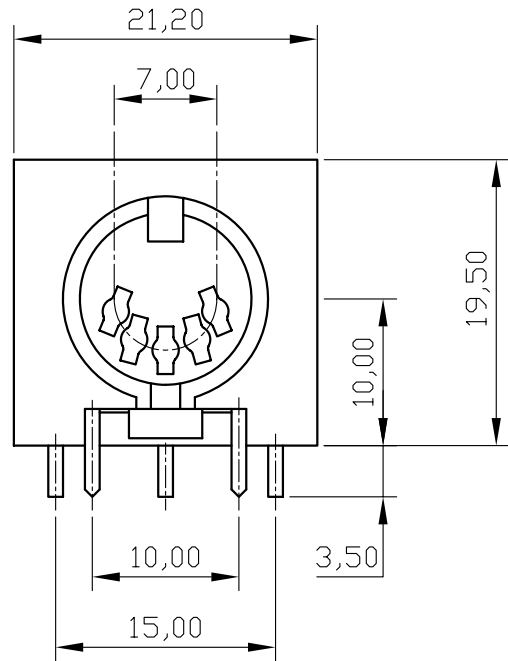


REV	ECN. NO.	APP	DATE
A	EDIÇÃO INICIAL		
B	NOVO CÓDIGO		



**SPECIFICATIONS**

1. Contact Resistance: 20mΩ Max.
2. Insulation Resistance: 100MΩ at 500V D.C
3. Voltage Withstanding: AC 500V 1 Minute
4. Insertion Force: 4.0Kg Max.
5. Withdraw all Force: 1-3,5Kg
6. Life Test: 5000 Cycles Min. after Test, Contact Resistance Shall not Exceed 50mΩ
7. Current Rating: AC: 100V 1A  
DC: 24V 1A

**HOW TO ORDER:**

**MD[ ][ ][10,0]R**

**1 2 3**

- |  |                                    |
|--|------------------------------------|
| 1- Nr. of Contacts<br>03 to 08   | 3- Mount Hole<br>5,00mm<br>10,00mm |
| 2- Body Options<br>(P)- All Plastic<br>(F)- With Shield and<br>With Grounding Strip<br>(S)- With Shield and<br>Without Grounding Strip |                                    |



**MATRIX Tecnologia Ind. e Com. Ltda.**

UNIT mm	SCALE 2:1	TITLE 10,0mm DIN JACK	DATE MARCH 2010
TOLERANCE: ±0.25			APP. BY
		MATL	CHK. BY
		DWG. NO.	DR. BY FELIPE