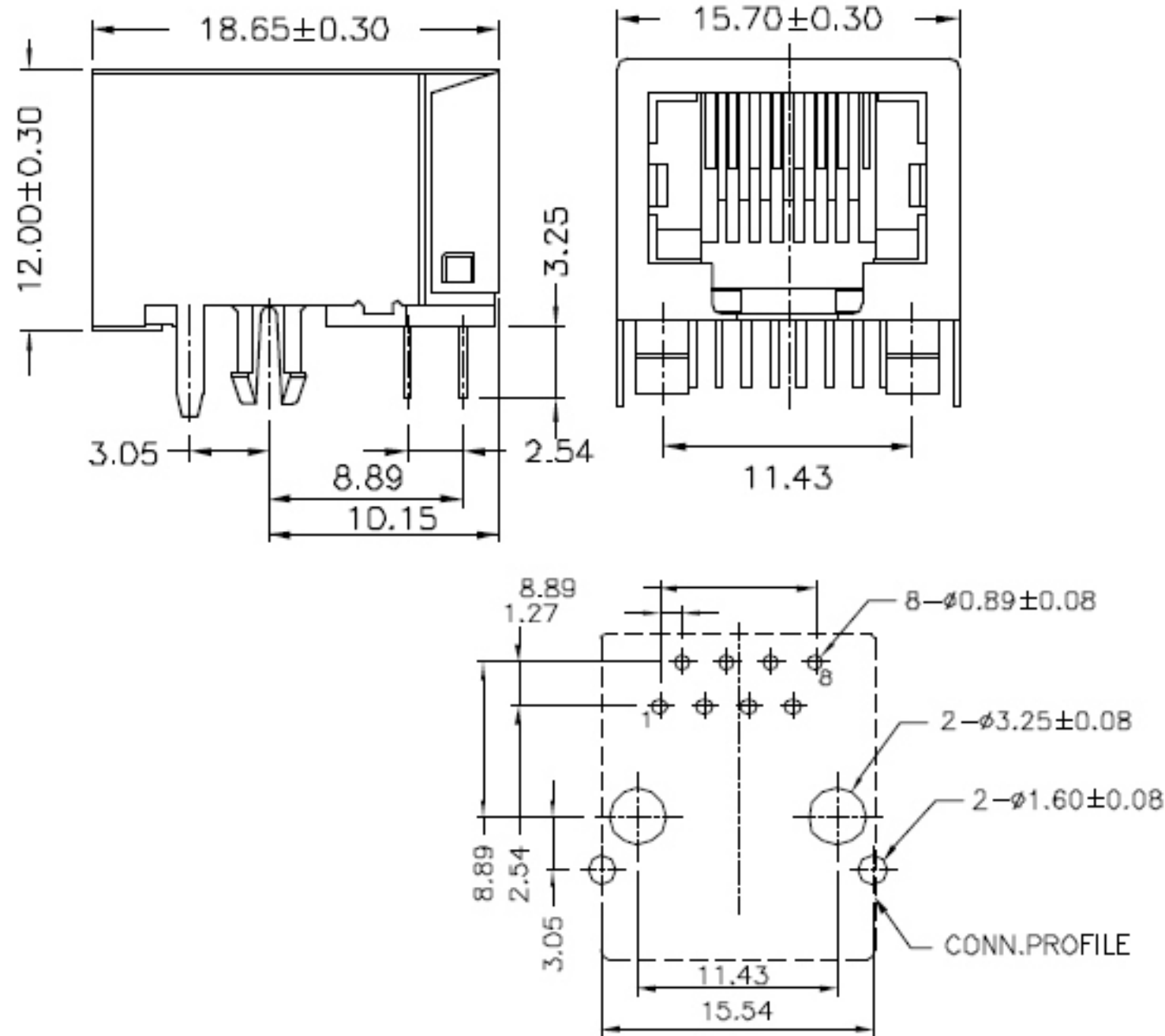


REV	ECN. NO.	APP	DATE
A	EDIÇÃO INICIAL		


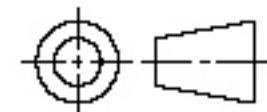
ELECTRICAL:

Current Rating : 1.5 AMP
Voltage Rating : 150 VAC
Contact Resistance : 20 Milliohms MAX
Insulation Resistance : 500 Milliohms MIN
Dielectric Withstanding Voltage : 1000 VAC, 1min



**HOW TO ORDER:
MX-2002-[8P8C]-[]-[J]-[]-60-[]**

- | | | | | |
|--|---|--|--|-----------------------|
| 1 | 2 | 3 | 4 | 5 |
| 1- No. Contact
(8P2C)
(8P4C)
(8P6C)
(8P8C)
(10P2C)
(10P4C)
(10P6C)
(10P8C)
(10P10C) | 2- Contact Plating:
()-Gold 6U"
(15)-Gold 15U"
(30)-Gold 30U"
(50)-Gold 50U" | 3- Body Option:
(N)-W/O Shielded
(F)-Front Shielded Only
(G)Fully Shielded A Type
(H)Fully Shielded B Type
(I)Fully Shielded C Type
(J)Fully Shielded D Type | 4- Gang Option:
()-1 Jack
(2)-2 Jacks
(3)-3 Jacks
(4)-4 Jacks
(5)-5 Jacks
(6)-6 Jacks
(7)-7 Jacks
(8)-8 Jacks
(9)-9 Jacks
(10)-10 Jacks
(11)-11 Jacks
(12)-12 Jacks | 5- (R)-RoHS Compliant |

 MATRIX Tecnologia Ind. e Com. Ltda.			
UNIT mm	SCALE	TITLE Side Entry PCB Jack	DATE September 2007
TOLERANCE: ±0.25			APP. BY
		MATL	CHK. BY
DWG. NO.			DR. BY Diego