

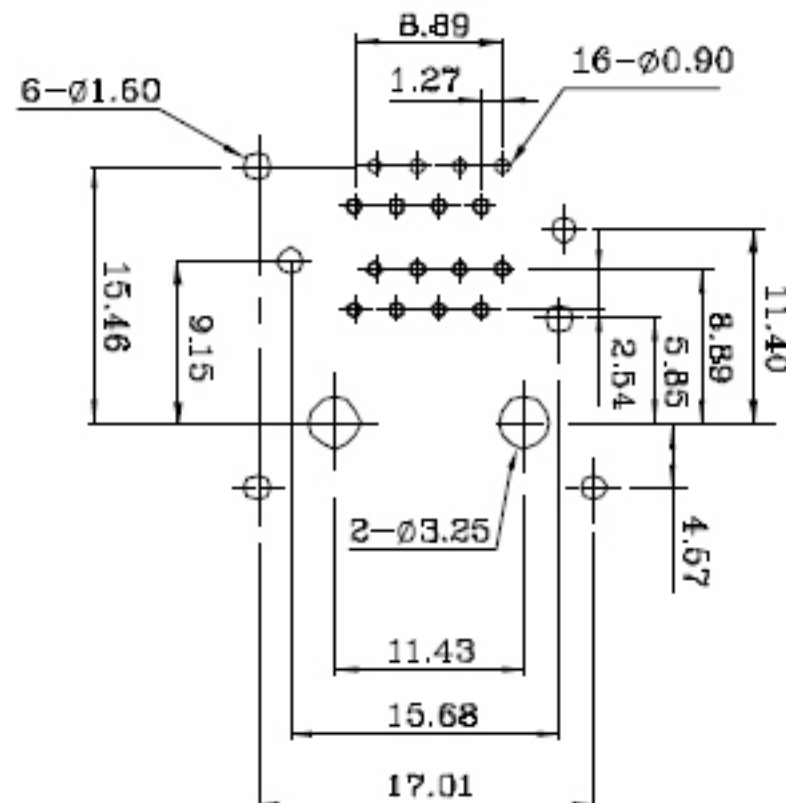
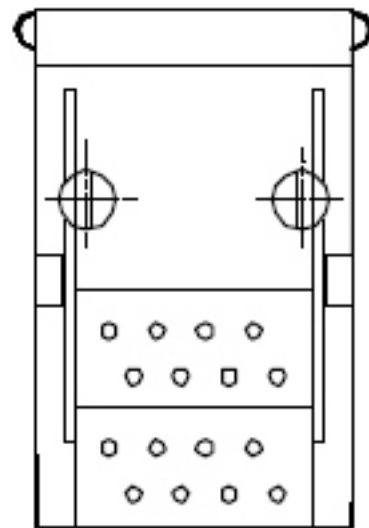
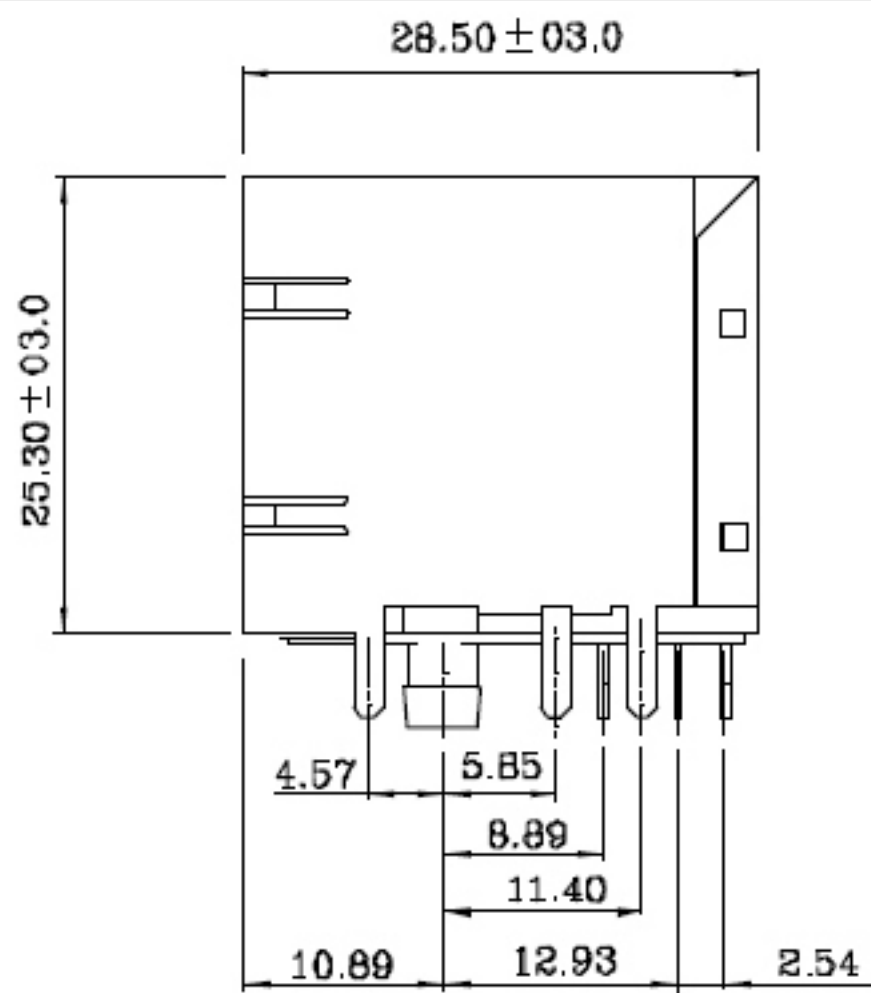
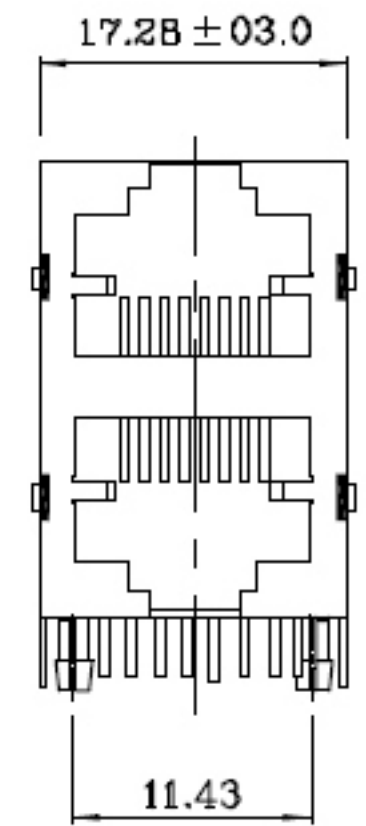
REV	ECN. NO.	APP	DATE
A	EDIÇÃO INICIAL		

ELECTRICAL:




1. Current Rating : 1.5 AMP
2. Voltage Rating : 150 VAC
3. Contact Resistance : 20 Milliohms MAX
4. Insulation Resistance : 500 Milliohms MIN
5. Dielectric Withstanding Voltage : 1000 VAC, 1min

HOW TO ORDER:
MX-2002-[8P8C]-[]-[Y]-[2]-61-[]

- | | | | | |
|--------------------------|---|--|--|-----------------------|
| 1 | 2 | 3 | 4 | 5 |
| 1- No. Contact
(8P8C) | 2- Contact Plating:
()-Gold 6U"
(15)-Gold 15U"
(30)-Gold 30U"
(50)-Gold 50U" | 3- Body Option:
(Y)-With Fully Shielded | 4- Stacked Option:
(2)-2x1 Jacks
(4)-2x2 Jacks
(6)-2x3 Jacks
(8)-2x4 Jacks
(12)-2x6 Jacks
(16)-2x8 Jacks | 5- (R)-RoHS Compliant |



PC BOARD LAYOUT

 MATRIX Tecnologia Ind. e Com. Ltda.		UNIT	SCALE	TITLE	DATE
		mm		Stacked P.C.B Jack	September 2007
TOLERANCE: ± 0.25				APP. BY	
 		MATL		CHK. BY	
		DWG. NO.		DR. BY DINO	