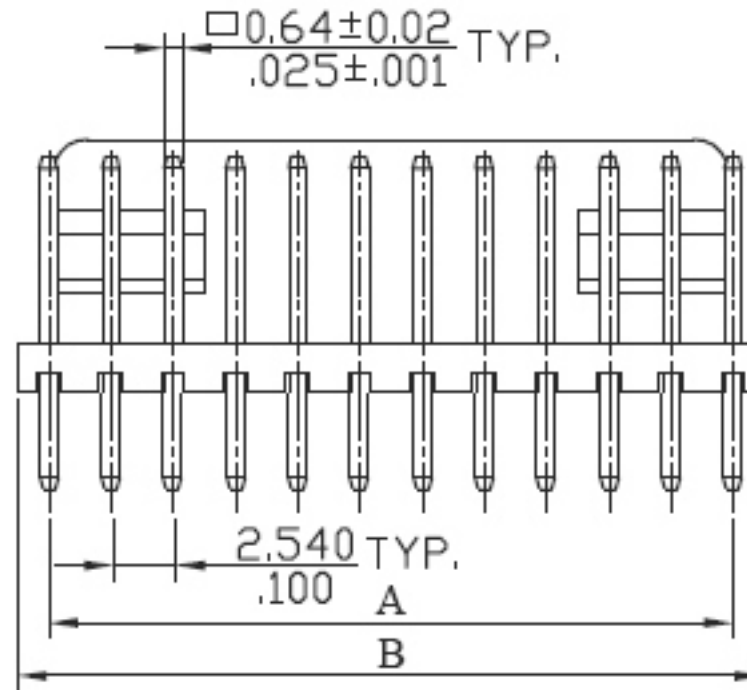
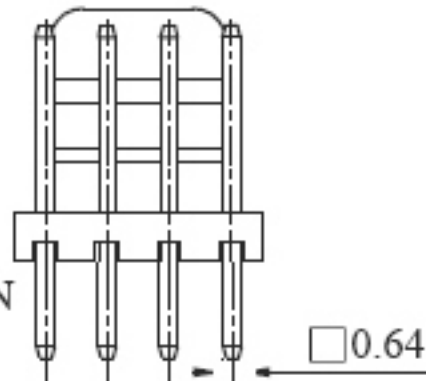
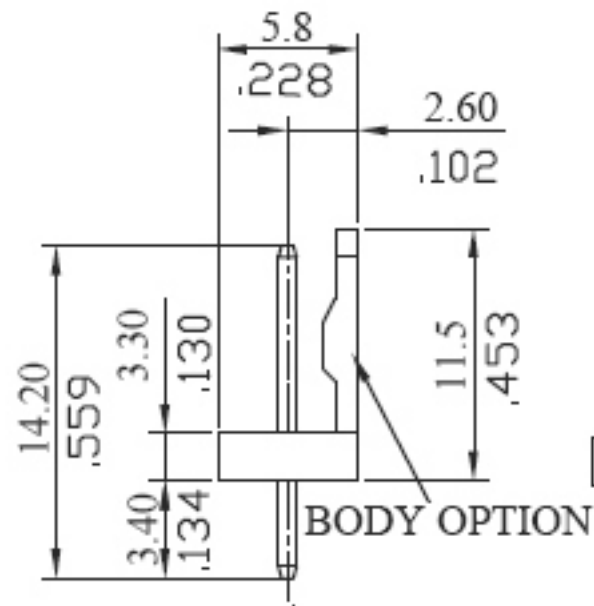


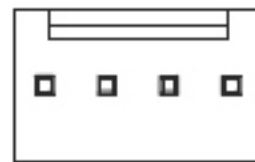
REV	ECN. NO.	APP	DATE
A	EDIÇÃO INICIAL		



### SPECIFICATION

Current Rating: 2A AC, DC  
Voltage Rating: 250V AC, DC  
Temperature Range: -25 to 85°C  
Contact Resistance: 20 m ohms Max.  
Insulation Resistance: 1,000M ohms Min.  
Withstanding Voltage: 1,500V AC/minute.  
Material: Nylon 66, UL94V-2  
Pin: Brass

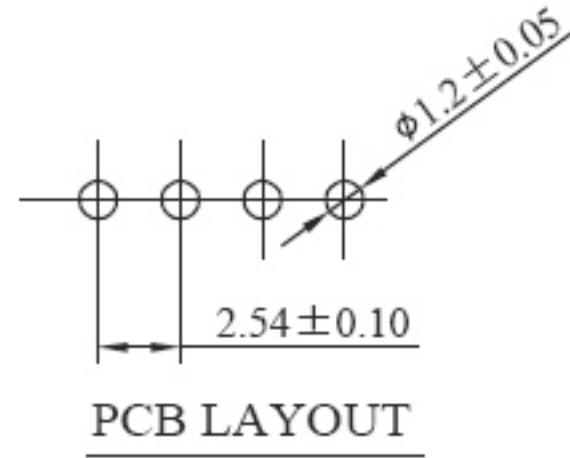
Poles	Dimension	
	A	B
2	2.54	5.12
3	5.08	7.66
4	7.62	10.20
5	10.16	12.74
6	12.70	15.30
7	15.24	17.94
8	17.78	20.48
9	20.32	23.02
10	22.86	25.58
11	25.40	28.12
12	27.94	30.68
13	30.48	33.10
14	33.02	35.80
15	35.56	38.34
16	38.10	40.94
17	40.64	43.30
18	43.18	45.90
19	45.72	48.56
20	48.26	50.80



### HOW TO ORDER: MX-6002-[ ]P-NE-[ ]

1 2

- 1- Nr. of Positions  
02 to 20
- 2- (R) RoHS Compliant



		<b>MATRIX TECNOLOGIA IND. E COM. LTDA.</b>	
UNIT mm	SCALE	TITLE	DATE SEPTEMBER 2007
TOLERANCE: ±0.25		2,54mm WAFER 180°	APP. BY
		MATL	CHK. BY
		DWG. NO.	DR. BY DIEGO