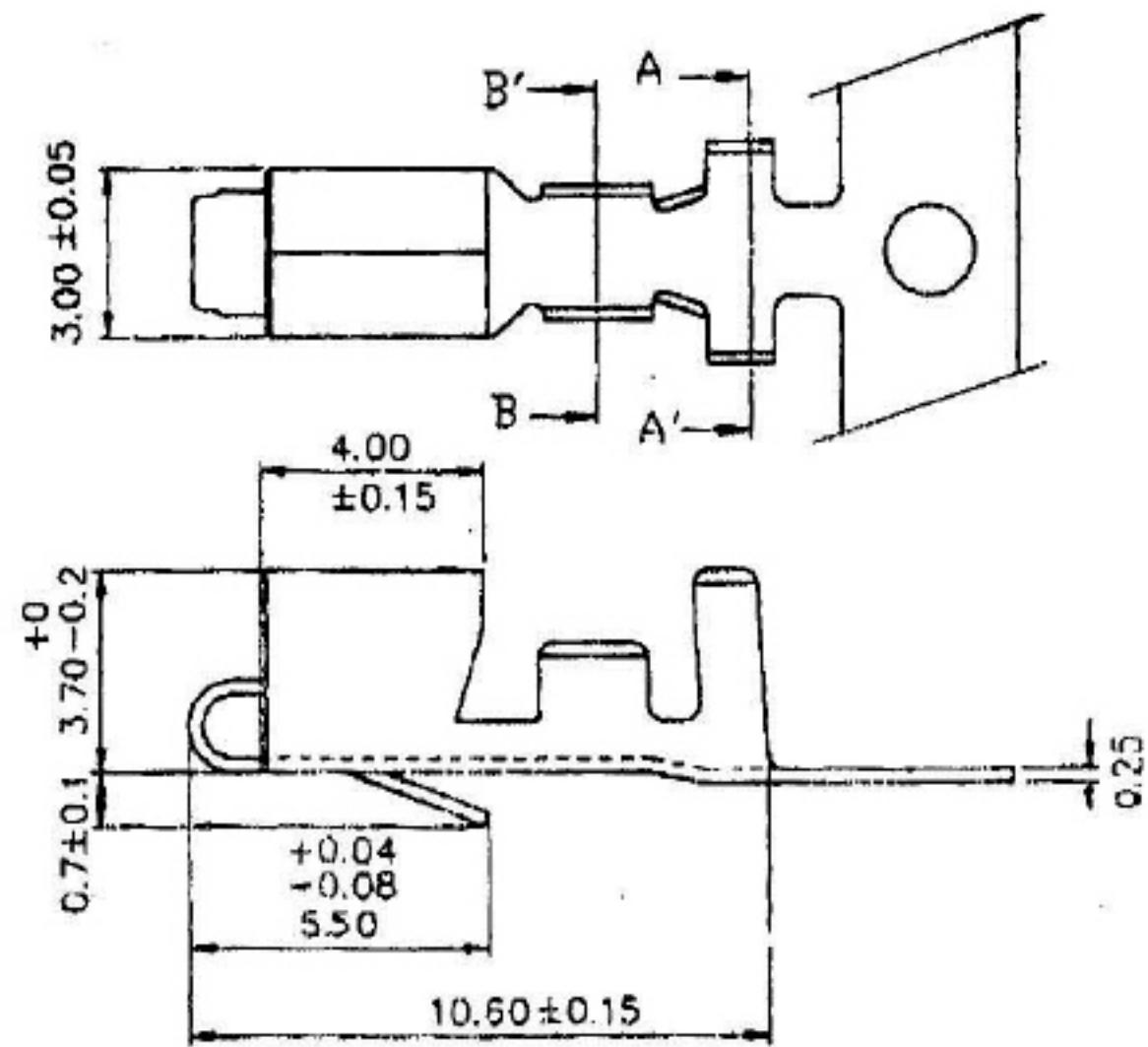
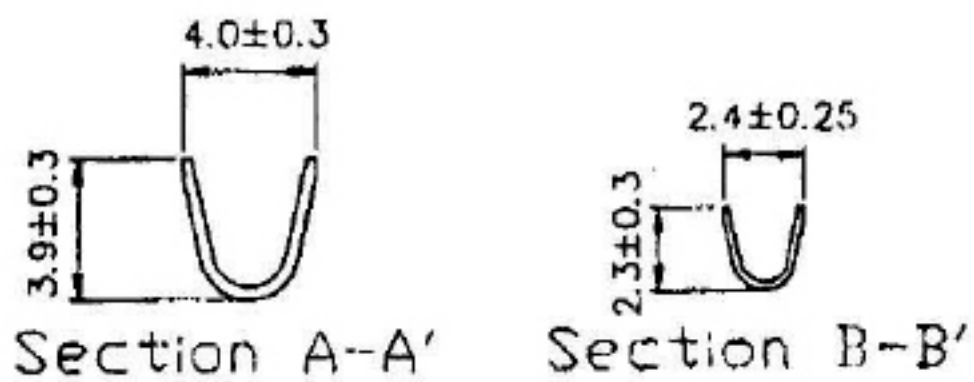


REV	ECN. NO.	APP	DATE
A	EDIÇÃO INICIAL		


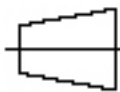



SPECIFICATION
 Current Rating: 5A AC, DC
 Voltage Rating: 250V AC, DC
 Temperature Range: -25° C ~ +85° C
 Contact Resistance: 10m ohms Max.
 Insulation Resistance: 1,000M ohms Min.



**HOW TO ORDER:
 MX-3966-T-[]**

1
 1- (R) RoHS Compliant

 MATRIX TECNOLOGIA IND. E COM. LTDA.			
UNIT mm	SCALE	TITLE 3,96mm TERMINAL	DATE SEPTEMBER 2007
TOLERANCE: ±0.25			APP. BY
 		MATL	CHK. BY
		DWG. NO.	DR. BY DINO