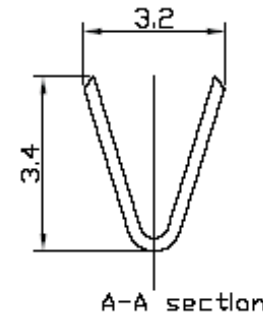
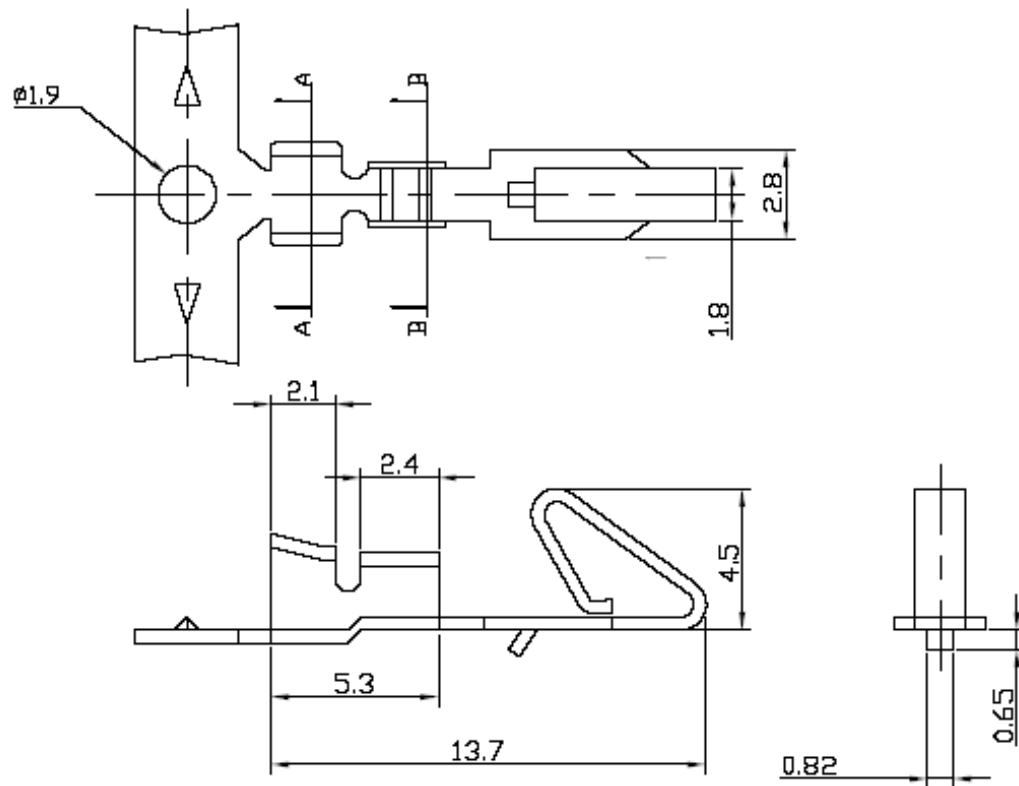
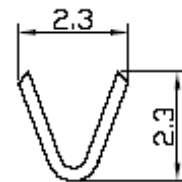


REV	ECN. NO.	APP	DATE
A	EDIÇÃO INICIAL		
B	NOVO CÓDIGO		



A-A section



B-B section

SPECIFICATION

Voltage Rating: 250V AC/DC

Current Rating: 5A AC/DC


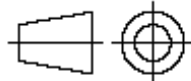
Temperature Range: -25°C $+85^{\circ}\text{C}$

Contact Resistance: 10 Milliohms Max.

Insulation Resistance: 1,000 Megohms Min.

Dielectric Withstanding Voltage:
1,500V AC/DC/Minute.

**HOW TO ORDER:
3960TR**

 MATRIX TECNOLOGIA IND. E COM. LTDA.			
UNIT mm	SCALE	TITLE	DATE MARCH 2010
TOLERANCE: ± 0.25		3,96mm TERMINAL	APP. BY
		MATL	CHK. BY
		DWG. NO.	DR. BY FELIPE