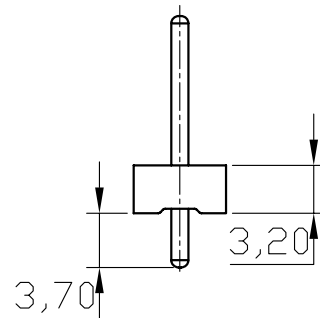
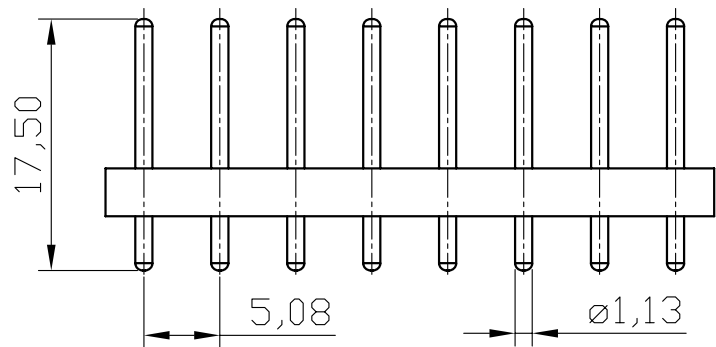
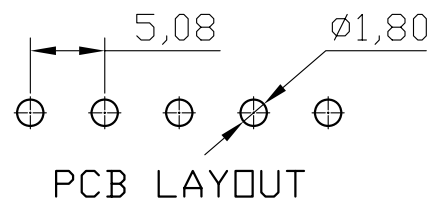
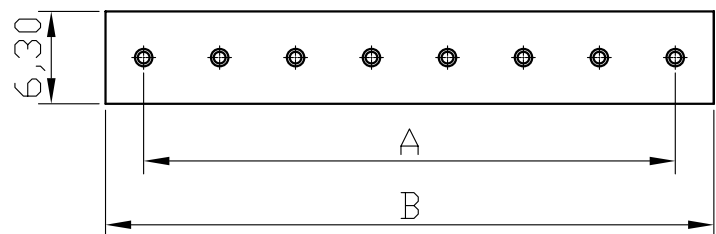


REV	ECN. NO.	APP	DATE
A	EDIÇÃO INICIAL		
B	NOVO CÓDIGO		



SPECIFICATION

Voltage Rating: 250V AC/DC
 Current Rating: 5A AC/DC
 Temperature Range: -25 ° C ~+85° C
 Contact Resistance: 20 Milliohms Max.
 Insulation Resistance: 1000 Megohms Min.
 Dielectric Withstanding Voltage: 1000V AC/DC/Minute.
 Material: Nylon 66, UL94V-2


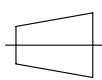
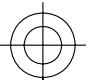


Dimension		
Poles	A	B
2	5,08	10,22
3	10,16	15,30
4	15,24	20,38
5	20,32	25,46
6	25,40	30,54
7	30,48	35,62
8	35,56	40,70
9	40,64	45,78
10	45,72	50,86
12	55,88	60,96

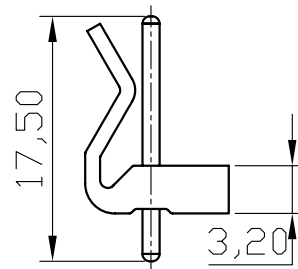
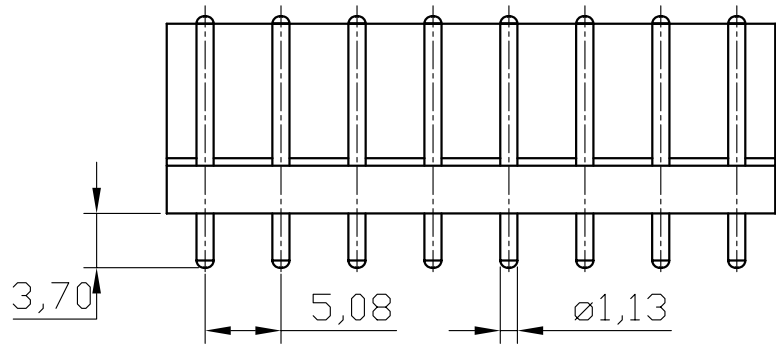
**HOW TO ORDER:
5080W[S]RP[][N]R**

1 2 3

1- Function (S)-180°
 2- N° of Contact 2 to 12
 3- Body Option: ()-With Back (N)-Without Back

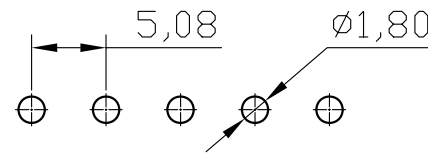
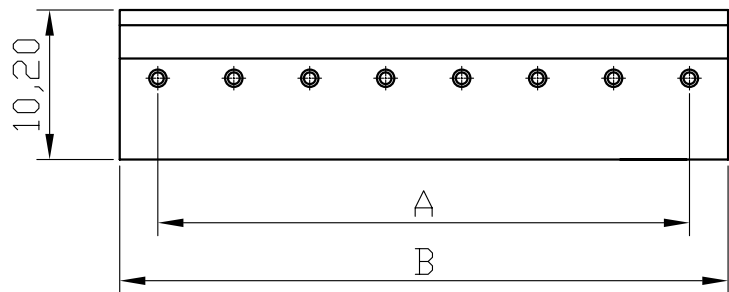
 MATRIX TECNOLOGIA IND. E COM. LTDA.			
UNIT mm	SCALE	TITLE 5,08mm WAFER 180° ROUND PIN WITHOUT BACK	DATE MARCH 2010
TOLERANCE: ±0.25			APP. BY
 		MATL	CHK. BY
		DWG. NO.	DR. BY FELIPE

REV	ECN. NO.	APP	DATE
A	EDIÇÃO INICIAL		
B	NOVO CÓDIGO		



SPECIFICATION

Voltage Rating: 250V AC/DC
 Current Rating: 5A AC/DC
 Temperature Range: -25 ° C ~+85° C
 Contact Resistance: 10 Milliohms Max.
 Insulation Resistance: 1000 Megohms Min.
 Dielectric Withstanding Voltage: 1500V AC/DC/Minute.
 Material: Nylon 66, UL94V-2
 Color: White



PCB LAYOUT

Dimension		
Poles	A	B
2	5,08	10,22
3	10,16	15,30
4	15,24	20,38
5	20,32	25,46
6	25,40	30,54
7	30,48	35,62
8	35,56	40,70
9	40,64	45,78
10	45,72	50,86
12	55,88	60,96

**HOW TO ORDER:
5080W[S]RP[][]R**

1 2 3
 1- Function (S)-180°
 2- N° of Contact 2 to 12
 3- Body Option: ()-With Back (N)-Without Back



MATRIX TECNOLOGIA IND. E COM. LTDA.

UNIT mm	SCALE	TITLE 5,08mm WAFER 180° ROUND PIN WITH BACK	DATE MARCH 2010
TOLERANCE: ±0.25			APP. BY
		MATL	CHK. BY
		DWG. NO.	DR. BY FELIPE