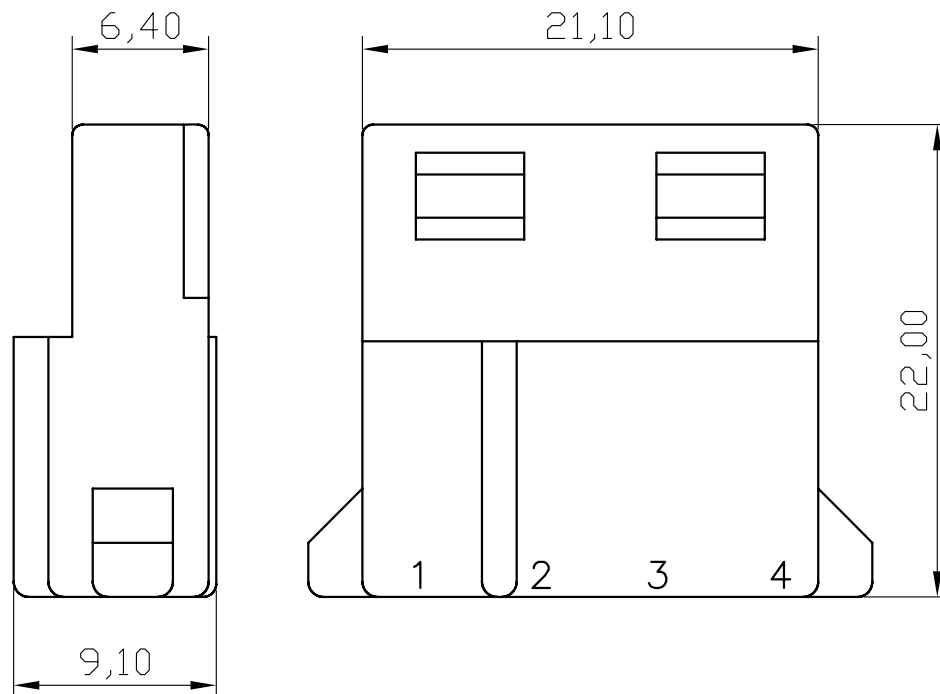
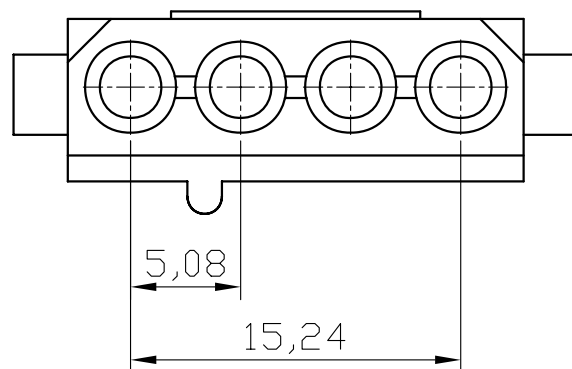


REV	ECN. NO.	APP	DATE
A	EDIÇÃO INICIAL		
B	NOVO CÓDIGO		



SPECIFICATION

Electric
 Current Rating: 5A AC, DC
 Voltage Rating: 250V AC, DC
 Temperature Range: -25° C ~+85° C
 Contact Resistance: 10m ohms max.
 Insulation Resistance: 1,000M ohms Min.
 Withstanding Voltage: 1,500V AC/minute.
 Material: Nylon 66, UL94V-2
 Color: White




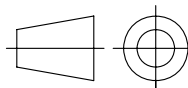
HOW TO ORDER:

2430HF[4]R

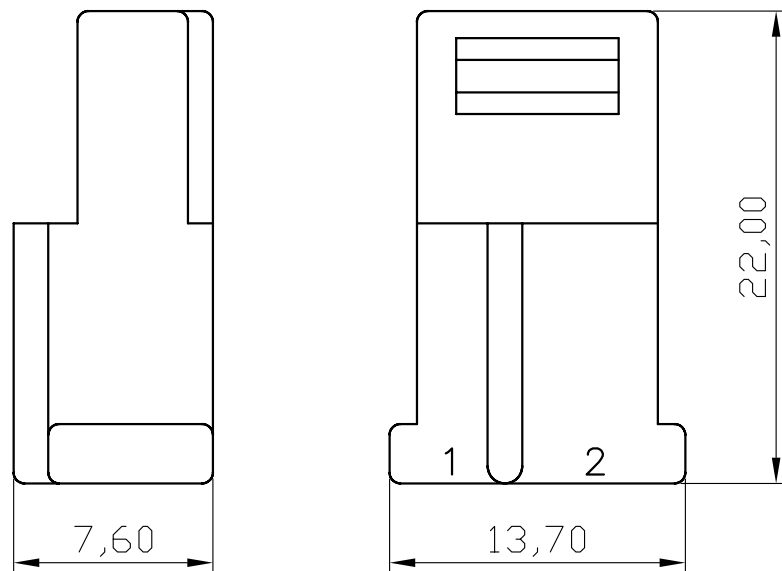
1

1- N° of Contacts
 2, 3, 4

 MATRIX TECNOLOGIA IND. E COM. LTDA.			
UNIT	mm	SCALE	TITLE
TOLERANCE: ±0.25			DATE MARCH 2010
			APP. BY
			CHK. BY
			DR. BY FELIPE

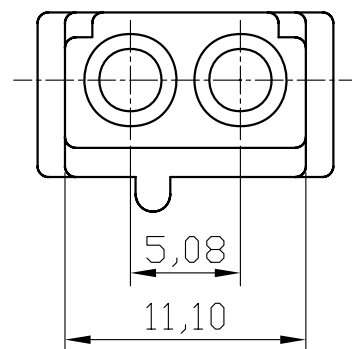


REV	ECN. NO.	APP	DATE
A	EDIÇÃO INICIAL		
B	NOVO CÓDIGO		



SPECIFICATION

Electric
 Current Rating: 5A AC, DC
 Voltage Rating: 250V AC, DC
 Temperature Range: -25° C ~+85° C
 Contact Resistance: 10m ohms max.
 Insulation Resistance: 1,000M ohms Min.
 Withstanding Voltage: 1,500V AC/minute.
 Material: Nylon 66, UL94V-2
 Color: White




HOW TO ORDER:

2430HF[2]R

1

1- N° of Contacts
 2, 3, 4

 MATRIX TECNOLOGIA IND. E COM. LTDA.			
UNIT	mm	SCALE	TITLE
TOLERANCE: ±0.25			DATE MARCH 2010
			5,08 HOUSING
			APP. BY
			CHK. BY
			DR. BY FELIPE

REV	ECN. NO.	APP	DATE
A	EDIÇÃO INICIAL		
B	NOVO CÓDIGO		

SPECIFICATION

Electric

Current Rating: 5A AC, DC

Voltage Rating: 250V AC, DC

Temperature Range: -25° C ~+85° C

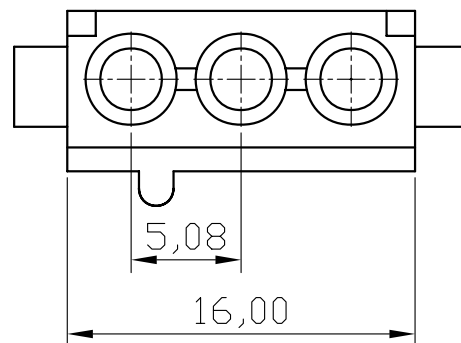
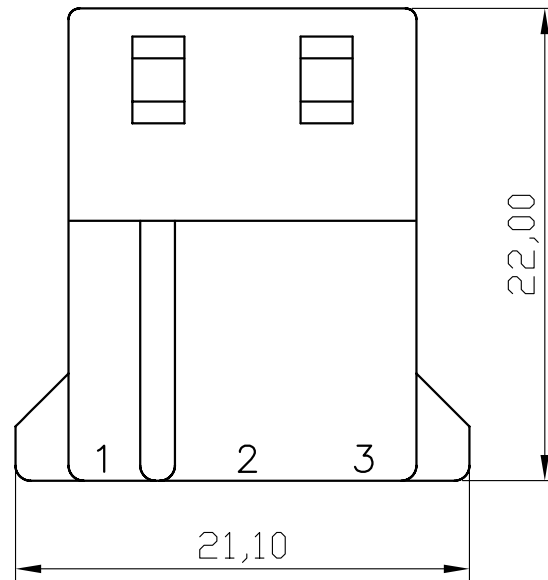
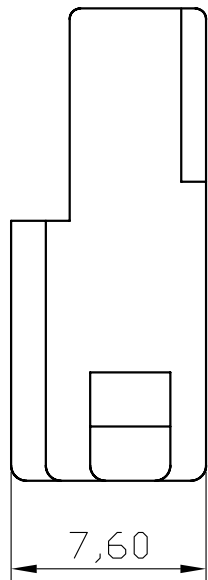
Contact Resistance: 10m ohms max.

Insulation Resistance: 1,000M ohms Min.

Withstanding Voltage: 1,500V AC/minute.

Material: Nylon 66, UL94V-2

Color: White



HOW TO ORDER:

2430HF[3]R

1

1- N° of Contacts
2, 3, 4



MATRIX TECNOLOGIA IND. E COM. LTDA.

UNIT mm	SCALE	TITLE 5,08 HOUSING	DATE MARCH 2010
TOLERANCE: ±0.25			APP. BY
		MATL	CHK. BY
		DWG. NO.	DR. BY FELIPE