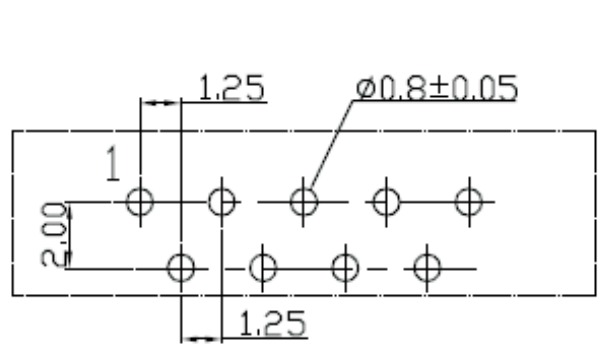


CKT	A	B
3	9.55	5.20
4	10.80	6.45
5	12.05	7.70
6	13.30	8.95
7	14.55	10.20
8	15.80	11.45
9	17.05	12.70
10	18.30	13.95
11	19.55	15.20
12	20.80	16.45
13	22.05	17.70
14	23.30	18.95
15	24.55	20.20
16	25.80	21.45
17	27.05	22.70
18	28.30	23.95
19	29.55	25.20
20	30.80	26.45
21	32.05	27.70
22	33.30	28.95
23	34.55	30.20
24	35.80	31.45
25	37.05	32.70
26	38.30	33.95
27	39.55	35.20
28	40.80	36.45
29	42.05	37.70
30	43.30	38.95
31	44.55	40.20
32	45.80	41.45

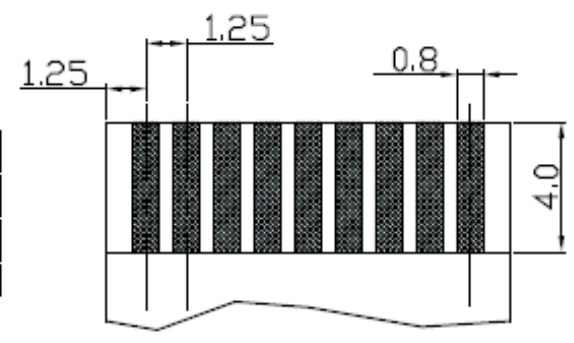
REV	ECN. NO.	APP	DATE
A	EDIÇÃO INICIAL		
B	NOVO CÓDIGO		

HOW TO ORDER: ZIF[] [S][E][B]1,25R 1 2 3 4

- 1- N° of Ways: See Table
- 2-Mounting Type: (S)-180° Type Normal Layout (E)-180° Type Reverse Layout (R)-90°
- 3- Terminal Plating: (E)-Sn
- 4- Thickness: (A)-0,3mm (B)-0,2mm (C)-0,1mm



RECOMMEND PCB LAYOUT
COMPONENT SIDE



FFC/FPC DIMENSION
THICKNESS 0.2±0.05mm

		MATRIX TECNOLOGIA IND. E COM. LTDA.	
UNIT mm	SCALE	TITLE ZIF DIP FFC/FPC 1,25mm	DATE JANUARY 2010
TOLERANCE: ±0.25			APP. BY
		MATL	CHK. BY
		DWG. NO.	DR. BY Felipe