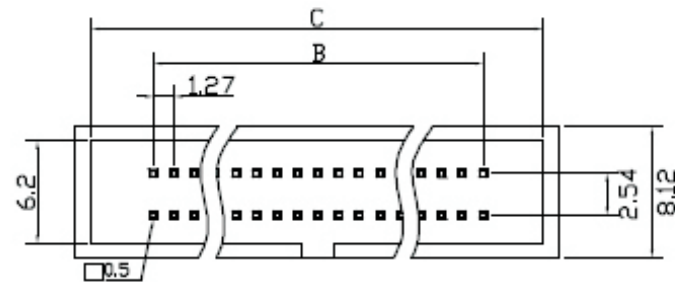
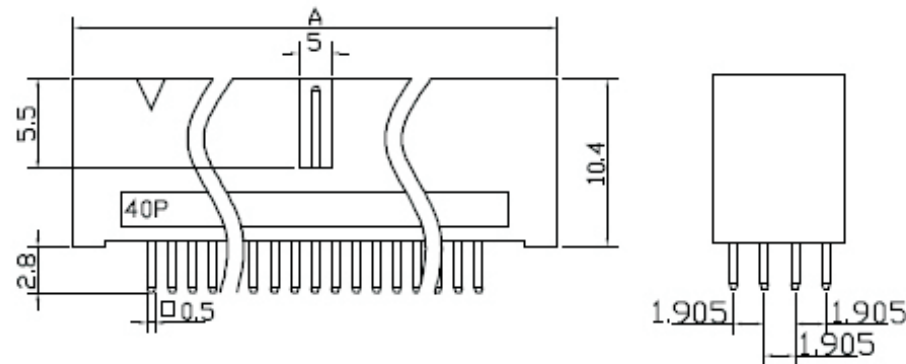


REV	ECN. NO.	APP	DATE
A	EDIÇÃO INICIAL		

Electrical Characteristics:
 Current Rating: 0.5AMP.
 Insulator Resistance: 5000MΩ min. at DC 500V.
 Contact Resistance: 20MΩ max. at DC 100mA.
 Operating Temperature: -55°~+105°



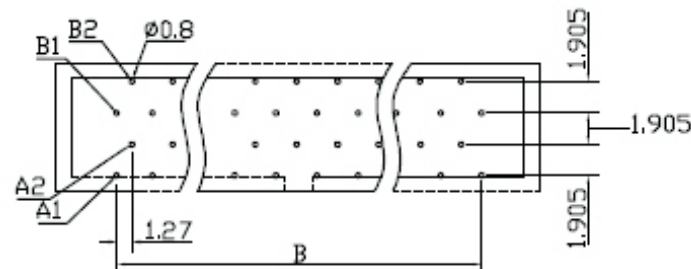
Position	DIMENSION		
	A	B	C
20	20.95	11.43	18.75
26	24.76	15.24	22.56
32	28.57	19.05	26.37
34	29.84	20.32	27.64
40	33.65	24.13	31.45
50	40.00	30.48	37.80
52	41.27	31.75	39.07
60	46.35	36.83	44.15
68	51.43	41.91	49.23
80	59.05	49.53	56.85
100	71.75	62.23	69.55

HOW TO ORDER: MX-3127-Q-[S]-[]-[]-[]

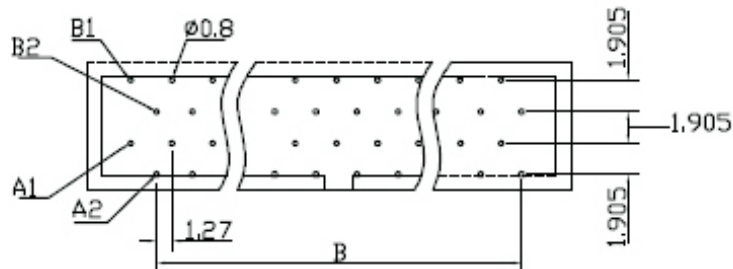
1 2 3 4

- 1- Pin Style (R)-90° (S)-180°
- 2- Nr. of Ways 20 to 100
- 3- Terminal Plating: (D)-FLASH Au (F)-0,38um Au (G)-0,76um Au (C)-0,38um Au/Sn (H)-0,76um Au/Sn

4- (R)-RoHS Compliant



P.C. Board Layout Top View
 (26,34,50 Position)



P.C. Board Layout Top View
 (20,32,40,52,60,68,80,100 Position)

		MATRIX TECNOLOGIA IND. E COM. LTDA.	
UNIT mm	SCALE	TITLE 1.27x2.54mm H.D. 180° Box Header Four Rows PHT	DATE SEPTEMBER 2007
TOLERANCE: ±0.25			APP. BY
		MATL	CHK. BY
		DWG. NO.	DR. BY DINO