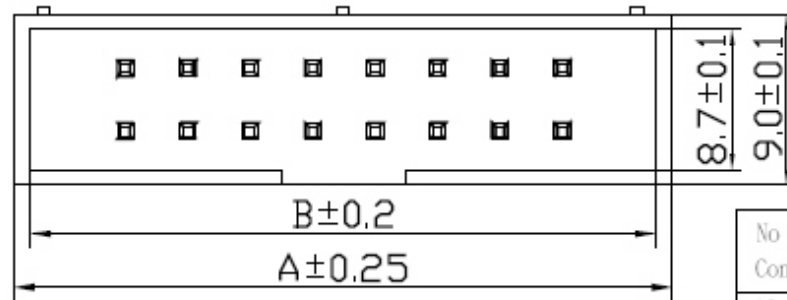
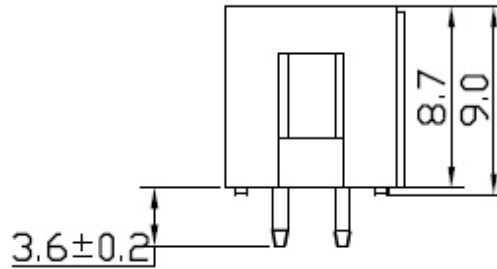
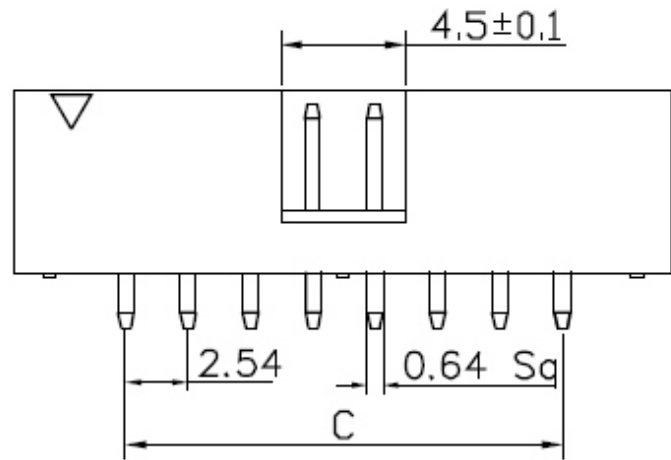


REV	ECN. NO.	APP	DATE
A	EDIÇÃO INICIAL		

**SPECIFICATIONS**

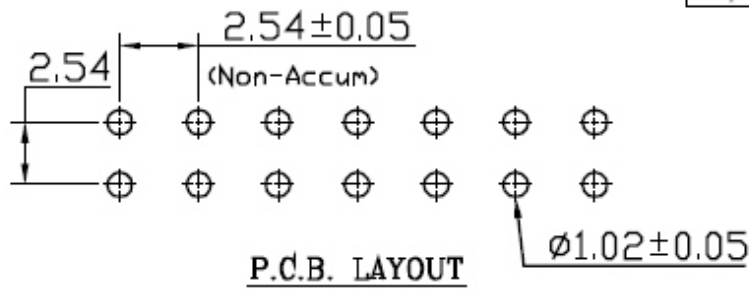
Current Rating: 1Amps  
 Insulator resistance: 1000 Megohms min.  
 Voltage: AC 500V For One minute  
 Operating Temperature: -55°C~+105°C  
 Contact Material: Bronze  
 Contact Plating: Gold Flash  
 Standard: PBT+30%Glass-Fiber{UL-94-V0}  
 Contact Resistance: 100mΩ min. At DC 500V


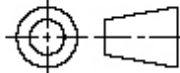


No of Contacts	Dimensions		
	A	B	C
10pin	20.3	18.1	10.16
14pin	25.38	23.18	15.24
16pin	27.92	25.72	17.78
20pin	33.0	30.8	22.85
26pin	40.62	38.42	30.48
34pin	50.8	48.58	40.64
40pin	58.4	56.2	48.26
50pin	71.1	68.9	60.96

**HOW TO ORDER:**  
**MX-3025-[S]-[ ]-[ ]-[ ]**  
**1 2 3 4**

- 1- Pin Style  
(R)-90°  
(S)-180°
- 2- Nr. of Ways  
10 to 50
- 3- Terminal Plating:  
(D)-FLASH Au  
(F)-0,38um Au  
(G)-0,76um Au  
(C)-0,38um Au/Sn  
(H)-0,76um Au/Sn
- 4- (R)-RoHS Compliant



 <b>MATRIX TECNOLOGIA IND. E COM. LTDA.</b>			
UNIT mm	SCALE	TITLE Box Header 2.54mm 180° PHT	DATE SEPTEMBER 2007
TOLERANCE: ±0.25			APP. BY
		MATL	CHK. BY
DWG. NO.			DR. BY DINO