

REV	ECN. NO.	APP	DATE
A	EDIÇÃO INICIAL		
B	NOVO CÓDIGO		

Material:

Insulator: PBT+30% Glass Fiber(Meet UL94V-0).

Contact: Copper Alloy.

Contact Plated: Gold or Tin over Nickel Plated.

Specification:

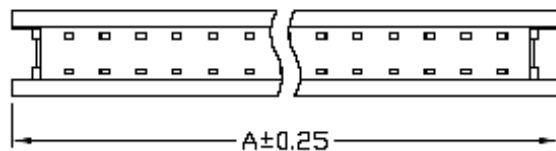
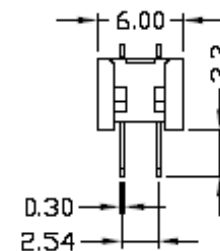
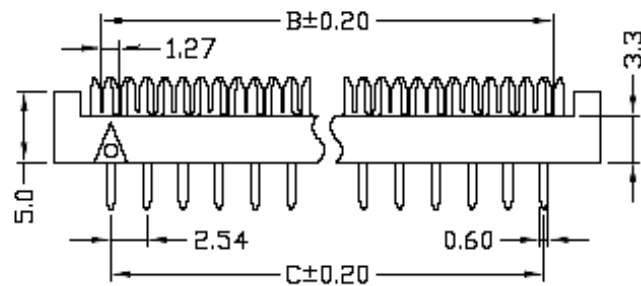
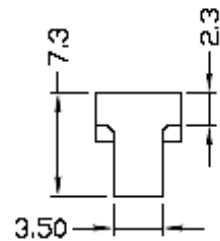
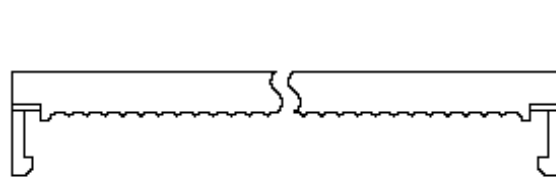
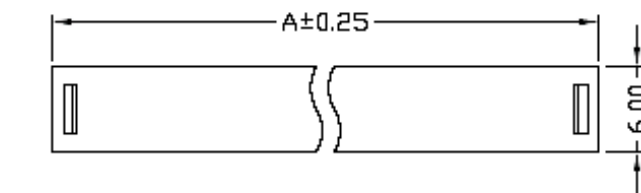
Current Rating: 1 Amp.

Withstanding Voltage: AC 500V For 1 Minute.

Insulation Resistance: 1000MΩ Min. at DC 500V.

Contact Resistance: 15mΩ Max.

Operating Temperature: -40°C~+105°C.



No. of Contacts	Dim. A	Dim. B	Dim. C
08	15.61	8.89	7.62
10	18.15	11.43	10.16
12	20.69	13.97	12.70
14	23.23	16.51	15.24
16	25.77	19.05	17.78
18	28.31	21.59	20.32
20	30.85	24.13	22.86
24	35.93	29.21	27.94
26	38.47	31.75	30.48
30	43.55	36.83	35.56
34	48.63	41.91	40.64
36	51.17	44.45	43.18
40	56.25	49.53	48.26
50	68.95	62.23	60.96
60	81.65	74.93	73.66
64	86.73	80.01	78.74

HOW TO ORDER:

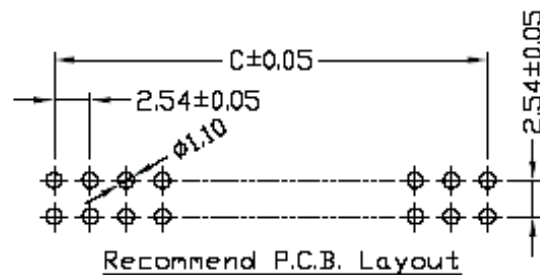
4403[][]R

1 2

1- N° of Ways
See Table

2- Terminal Plating:

- (E)-Sn
- (D)-FLASH Au
- (F)-0,38um Au
- (G)-0,76um Au
- (C)-0,38um Au/Sn
- (H)-0,76um Au/Sn



		MATRIX TECNOLOGIA IND. E COM. LTDA.	
UNIT mm	SCALE	TITLE 2,54mm DIP PLUG CONNECTOR	DATE DECEMBER 2009
TOLERANCE: ±0.25			APP. BY
		MATL	CHK. BY
		DWG. NO.	DR. BY Felipe