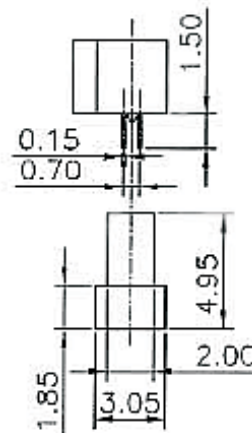
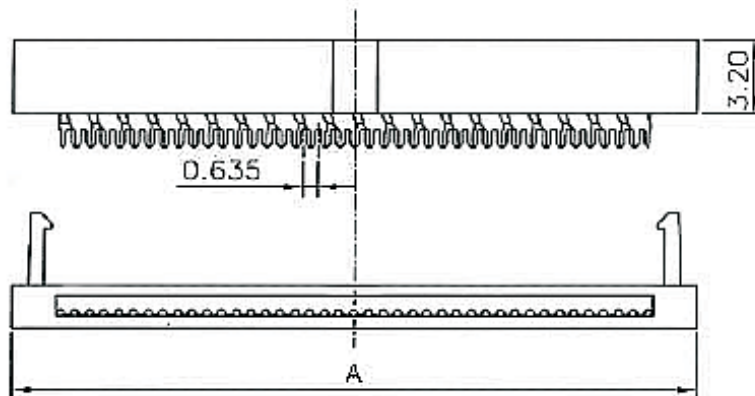
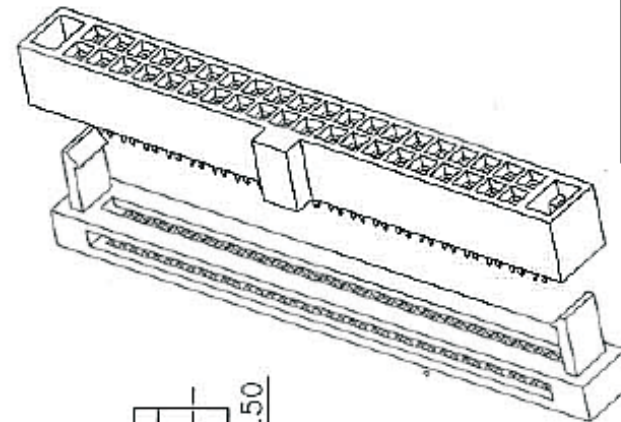
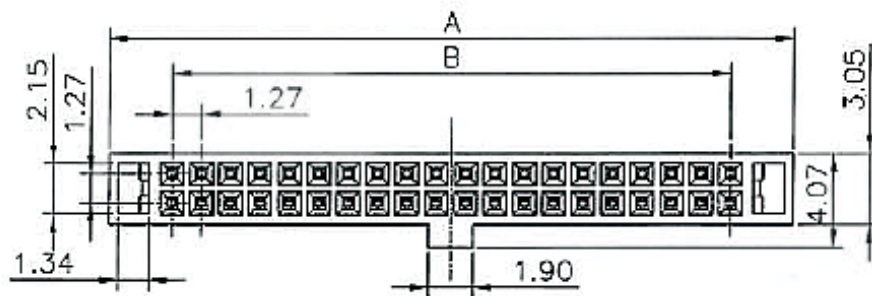


REV	ECN. NO.	APP	DATE
A	EDIÇÃO INICIAL		



SPECIFICATION:
ELECTRICAL


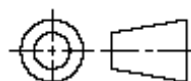
Current Rating: 0.5A
Voltage Rating: 250V AC
Insulation Resistance: 5000M Ω Min
Contact Resistance: 10m Ω Max.
Dielectric Withstanding Voltage: AC 1500V
Temperature Rating: -40°C To +105°C

HOW TO ORDER:
4401[][SR][][WB]1,27R
1 2 3 4

1- Nr. of Ways
See Table
2- Function
(SR) With Strain Relief
() Without Strain Relief

3- Terminal Plating
(D)-FLASH Au
(F)-0,38um Au
(G)-0,76um Au
(C)-0,38um Au/Sn
(H)-0,76um Au/Sn
4- Body Option
(WB) With Bump
() Without Bump

PIN Q'TY	A	B	PIN Q'TY	A	B
34 PIN	25.78	20.32	6 PIN	8.00	2.54
40 PIN	29.59	24.13	10 PIN	10.54	5.08
44 PIN	32.13	26.67	12 PIN	11.81	6.35
50 PIN	35.94	30.48	16 PIN	14.35	8.89
60 PIN	42.29	36.83	20 PIN	16.89	11.43
68 PIN	47.37	41.91	26 PIN	20.70	15.24
80 PIN	54.99	49.53	30 PIN	23.24	17.78

 MATRIX		MATRIX TECNOLOGIA IND. E COM. LTDA.	
UNIT mm	SCALE	TITLE IDC Socket Connector 1,27x1,27mm	DATE SEPTEMBER 2007
TOLERANCE: ± 0.25		APP. BY	
		MATL	CHK. BY
		DWG. NO.	DR. BY DINO