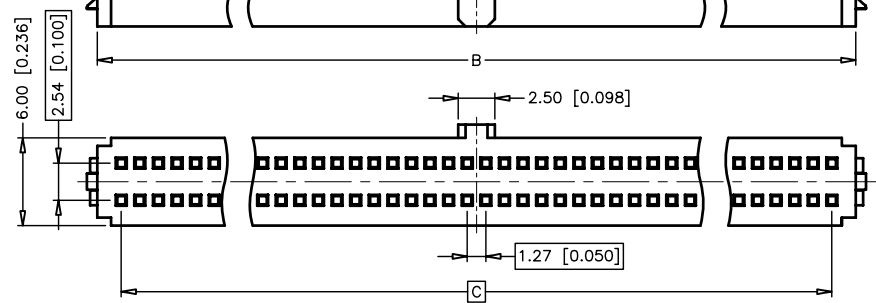
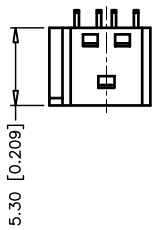
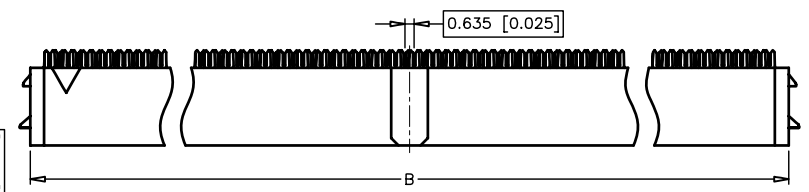
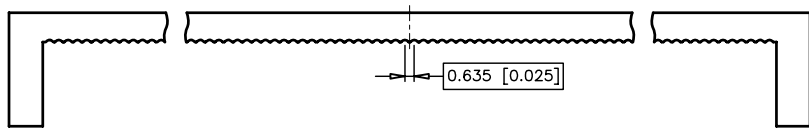
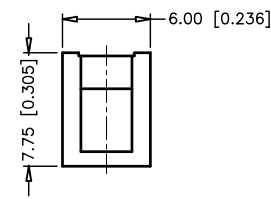
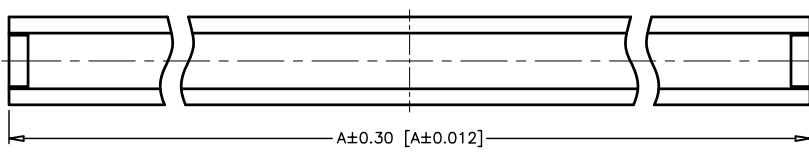
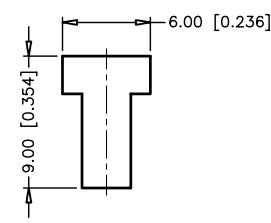
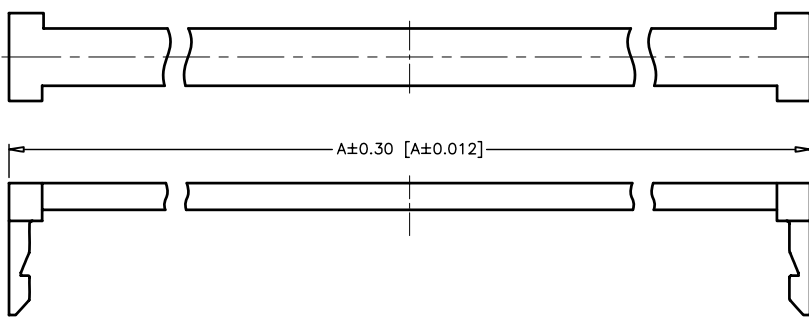


REV	ECN. NO.	APP	DATE
A	EDIÇÃO INICIAL		

SPECIFICATIONS
 Current Rating: 1A Max.
 Insulation Resistance: 500MΩ Min.
 Dielectric Withstanding Voltage: 500V AC For 1 Minute.
 Contact Resistance: 30mΩ Max.
 Operating Temperature: -40°C ~ +85°C.



	100	80	68	60	50	40	34	30	26	20	16	10
	68.50 [2.697]	55.80 [2.197]	48.18 [1.897]	43.10 [1.697]	36.75 [1.457]	30.40 [1.197]	26.59 [1.047]	24.05 [0.947]	21.51 [0.847]	17.70 [0.697]	15.16 [0.597]	11.35 [0.447]
	65.60 [2.583]	52.90 [2.083]	45.28 [1.783]	40.20 [1.583]	33.85 [1.333]	27.50 [1.083]	23.69 [0.933]	21.15 [0.833]	18.61 [0.733]	14.80 [0.583]	12.26 [0.483]	8.45 [0.333]
	62.23 [2.450]	49.53 [1.950]	41.91 [1.650]	36.83 [1.450]	30.48 [1.200]	24.13 [0.950]	20.32 [0.800]	17.78 [0.700]	15.24 [0.600]	11.43 [0.450]	8.89 [0.350]	5.08 [0.200]
Number of Position	A	B	C	DIMENSIONS								

HOW TO ORDER:

MX4401[][SR][]WB1,27x2,54R

1 2 3

- 1- Nr. of Ways
See Table
- 2- Function
(SR) With Strain Relief
() Without Strain Relief
- 3- Terminal Plating
(D)-FLASH Au
(F)-0,38um Au
(G)-0,76um Au
(C)-0,38um Au/Sn
(H)-0,76um Au/Sn

		MATRIX TECNOLOGIA IND. E COM. LTDA.	
UNIT mm	SCALE 2:1	TITLE IDC SOCKET 1,27x2,54mm WITH BUMP	DATE SEPTEMBER 2007
TOLERANCE: ±0.25		APP. BY	CHK. BY
		MATL	DR. BY DINO
		DWG. NO.	