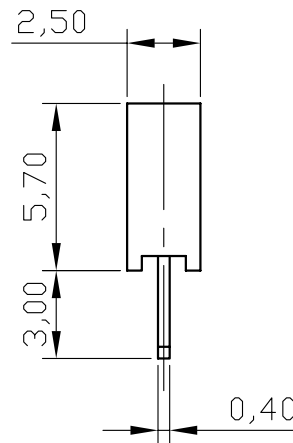
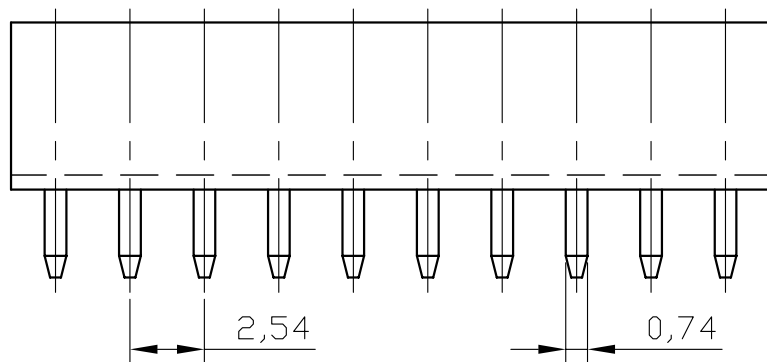


REV	ECN. NO.	APP	DATE
A	EDIÇÃO INICIAL		

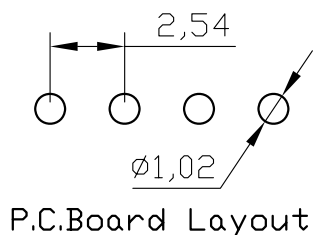
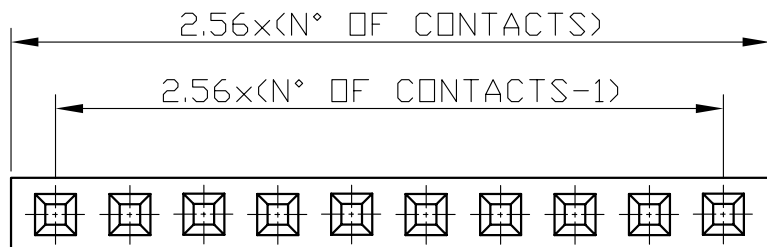


SPECIFICATIONS

Current Rating: 3Amp
Contact Resistance: 20mΩ Max.
Insulation Resistance: 500MΩ Min.
Dielectric Withstanding: 600VAC
Operating Temperature: -40 to 105°C

MATERIAL

Contact Material: Copper Alloy
Contact Plating: Gold/Tin over Nickel
Insulator: Glass Filled Polyester (UL 94V-0)



HOW TO ORDER: MAT[][S][R][][S[5.7]][][R] 1 2 3 4 5 6 7

- 1- Nr. of Ways
Single Row: 1 to 40
Double Row: 2 to 80
- 2- Row Version:
(S)-Single Row
(D)-Double Row
- 3- Pin Style
(N)-90°
(R)-180°
- 4- Terminal Plating:
(E)-Sn
(D)-FLASH Au
(F)-0,38um Au
(G)-0,76um Au
(C)-0,38um Au/Sn
(H)-0,76um Au/Sn
- 5- Profile:
(5.5)-5,50mm
(5.7)-5,70mm
- 6- Pin Length:
(A)-2,70mm (Standard)
(B)-11,0mm
- 7- (R)RoHS Compliant

 MATRIX Tecnologia Ind. e Com. Ltda.			
UNIT mm	SCALE 4:1	TITLE FEMALE HEADER 2.54mm	DATE JULY 2007
TOLERANCE: ±0.25		HEIGHT 5.7mm SINGLE ROW 180°	APP. BY
 		MATL	CHK. BY
		DWG. NO.	DR. BY DIEGO