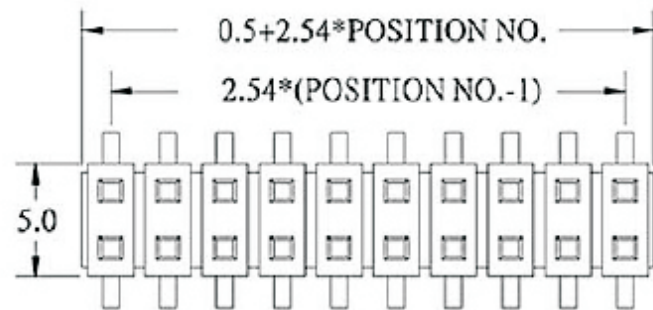
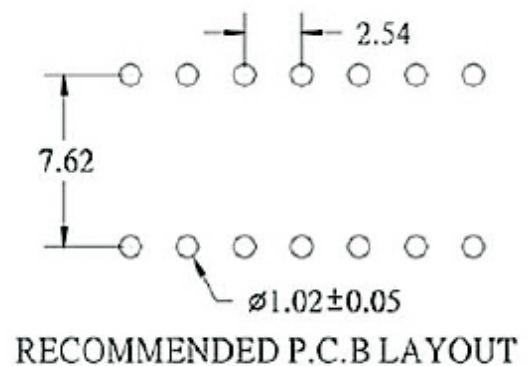
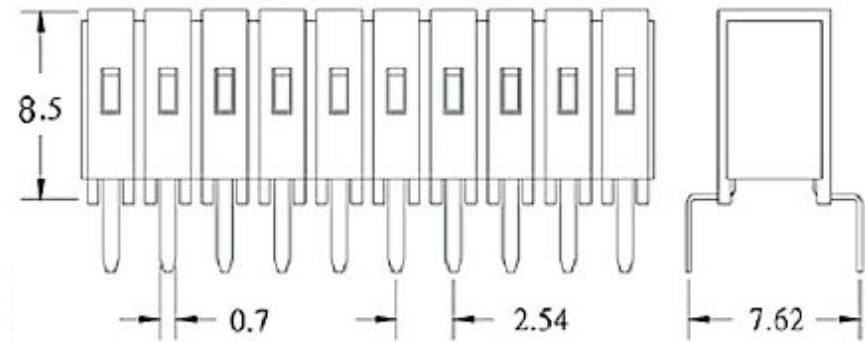


REV	ECN. NO.	APP	DATE
A	EDIÇÃO INICIAL		



(TYPE B)



## SPECIFICATIONS

### Electrical

- Current Rating : 1 Amp
- Contact Resistance : 30 mΩ max.
- Insulation Resistance : 3000 MΩ min.
- Dielectric Withstanding Voltage : 500V AC for 1 minute
- Operating Temperature : -40°C to +105°C

**HOW TO ORDER:**  
**MAT-[ ]-[D]-[R]-[ ]-D-J-B-[ ]**  
**1 2 3 4 5**

- 1- Nr. of Ways  
Double Row: 2 to 80
- 2- Row Version:  
(D)-Double Row
- 3- Pin Style  
(R)-180°
- 4- Terminal Plating:  
(E)-Sn  
(D)-FLASH Au  
(F)-0,38um Au  
(G)-0,76um Au  
(C)-0,38um Au/Sn  
(H)-0,76um Au/Sn
- 5- (R) RoHS Compliant

		<b>MATRIX Tecnologia Ind. e Com. Ltda.</b>	
UNIT mm	SCALE	TITLE 2.54mm FEMALE HEADER DUAL ROW 180°	DATE September 2007
TOLERANCE: ±0.25			APP. BY
		MATL	CHK. BY
		DWG. NO.	DR. BY Diego