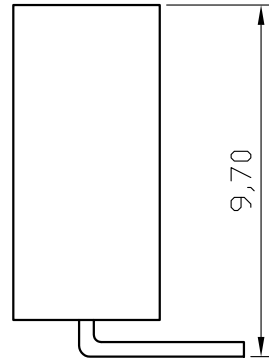
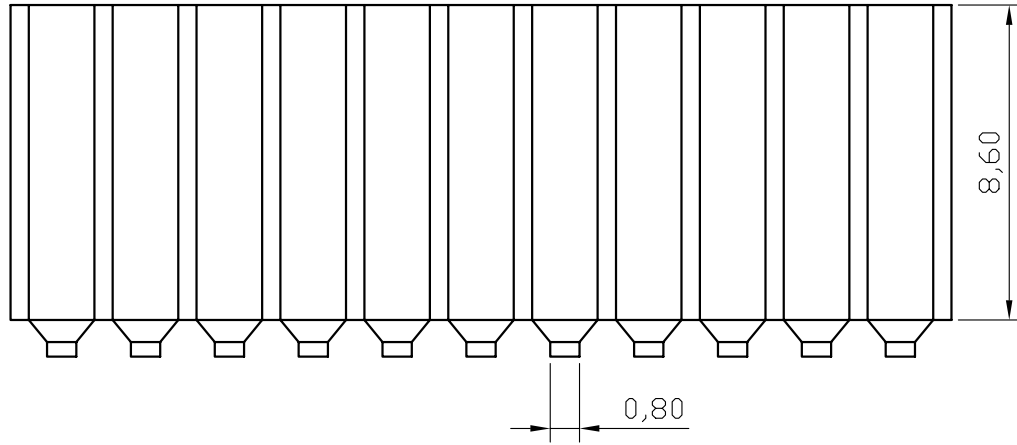
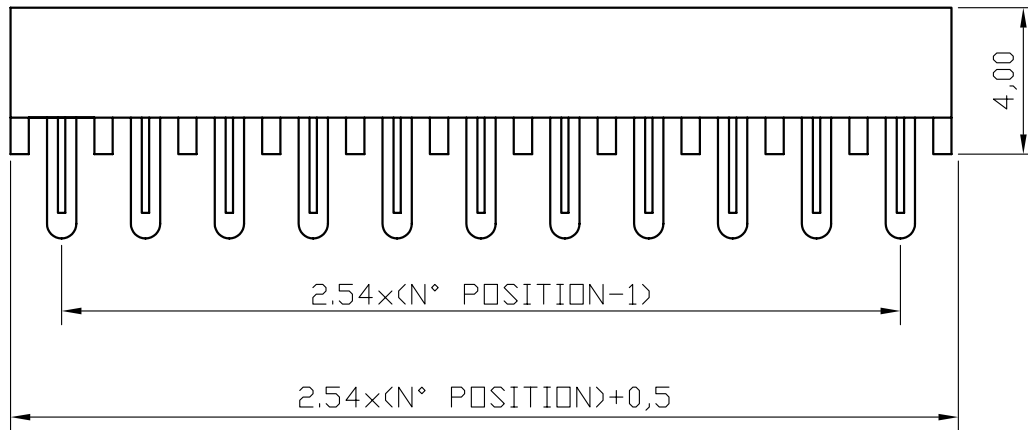


REV	ECN. NO.	APP	DATE
A	EDIÇÃO INICIAL		



**SPECIFICATIONS**

Current Rating: 1 Amp DC  
 Contact Resistance: 30 MilliΩhm Max.  
 Insulation Resistance: 1000 MegΩhm Min.  
 Dielectric Voltage: 500V AC for One Minute  
 Operating Temperature: -40°C to 105°C



**HOW TO ORDER:**  
**MAT-[ ]-[S]-[N]-[ ]-S-P8.6-W-[ ]**  
**1 2 3 4 5**

- 1- Nr. of Ways  
 Single Row: 1 to 40  
 Double Row: 2 to 80
- 2- Row Version:  
 (S)-Single Row
- 3- Pin Style  
 (N)-90°
- 4- Terminal Plating:  
 (E)-Sn  
 (F)-FLASH Au  
 (A)-0,38um Au  
 (B)-0,76um Au  
 (C)-0,38um Au/Sn  
 (D)-0,76um Au/Sn
- 5- (R) RoHS Compliant



**MATRIX Tecnologia Ind. e Com. Ltda.**

UNIT mm	SCALE 5:1	TITLE 2.54mm WALY FEMALE HEADER SINGLE ROW 90°	DATE JULY 2007
TOLERANCE: ±0.25			APP. BY
		MATL	CHK. BY
		DWG. NO.	DR. BY DIEGO