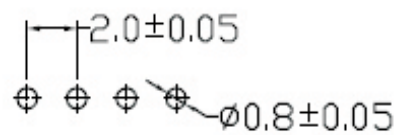
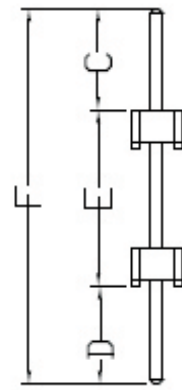
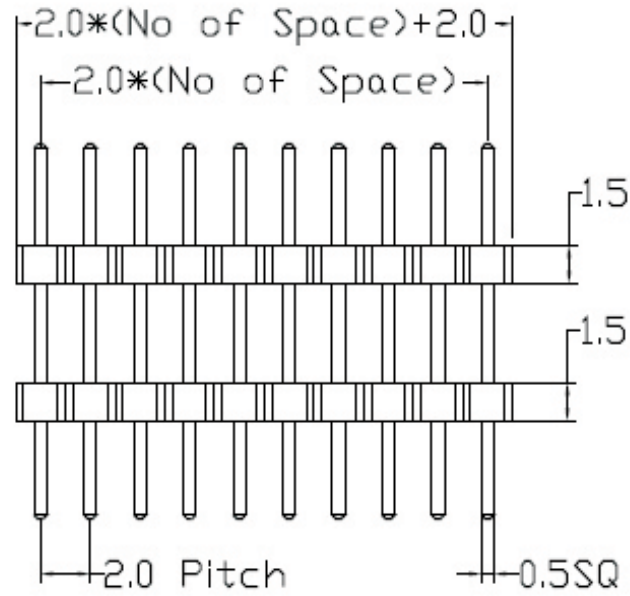


REV	ECN. NO.	APP	DATE
A	EDIÇÃO INICIAL		



P.C.Board Layout

SPECIFICATIONS

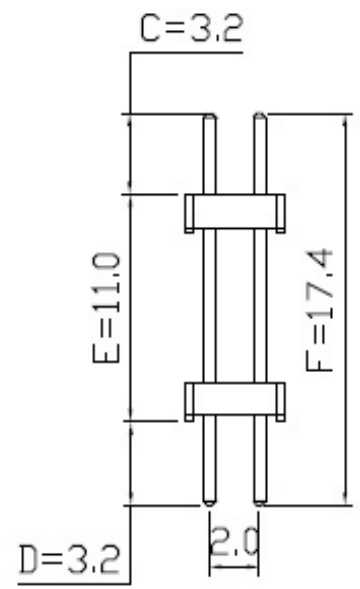
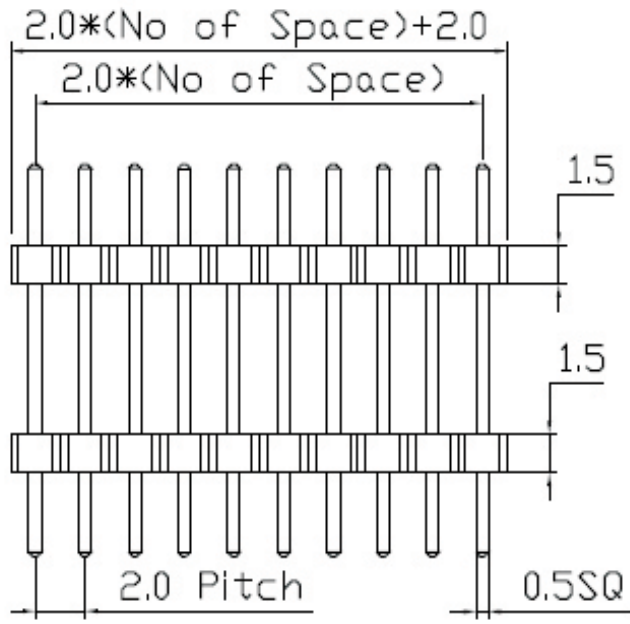
Current Rating: 2 Amps
 Dielectric Withstanding: AC 500V
 Operating Temperature: -40°C to +105°C
 Max Processing Temp: 230° for 30-60 seconds
 (260° for 10 seconds)

HOW TO ORDER:
MCT[][S][R][][][]2[E][][R]
1 2 3 4 5 6 7 8

- 1- Nr. of Ways
Single Row: 1 to 40
- 2- Row Version:
(S)-Single Row
- 3- Pin Style
(N)-90°
(R)-180°
- 4- Terminal Plating:
(E)-Sn
(F)-FLASH Au
(A)-0,38um Au
(B)-0,76um Au
(C)-0,38um Au/Sn
(D)-0,76um Au/Sn
- 5- According to Customer Design
- 6- Profile:
(E)-1,5mm
- 7- Options:
(T)-Tube Packing
- 8-(R) RoHS Compliant

		MATRIX TECNOLOGIA IND. E COM. LTDA.	
UNIT mm	SCALE	TITLE	DATE SEPTEMBER 2007
TOLERANCE: ±0.25		2.0mm MCT HEIGHT 1.5mm SINGLE ROW	APP. BY
		MATL	CHK. BY
		DWG. NO.	DR. BY DIEGO

REV	ECN. NO.	APP	DATE
A	EDIÇÃO INICIAL		

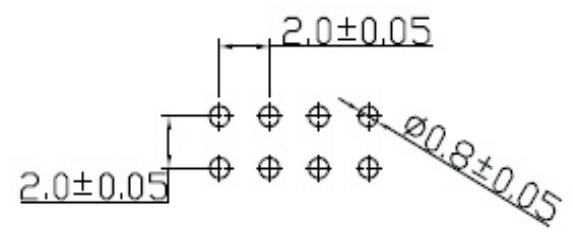
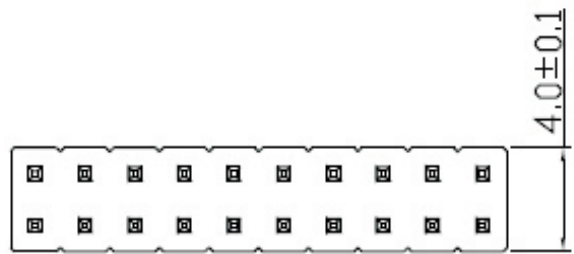


SPECIFICATIONS

Current Rating: 2 Amps
 Dielectric Withstanding: AC 500V
 Operating Temperature: -40°C to +105°C
 Max Processing Temp: 230° for 30-60 seconds
 (260° for 10 seconds)

HOW TO ORDER:
MCT[][D][R][]S2[E][][R]
1 2 3 4 5 6 7

- 1- Nr. of Ways
Dual Row: 2 to 80
- 2- Row Version:
(D)-Dual Row
- 3- Pin Style
(N)-90°
(R)-180°
- 4- Terminal Plating:
(E)-Sn
(F)-FLASH Au
(A)-0,38um Au
(B)-0,76um Au
(C)-0,38um Au/Sn
(D)-0,76um Au/Sn
- 5- Profile:
(E)-1,5mm
- 6- Options:
(T)-Tube Packing
- 7-(R) RoHS Compliant



P.C.Board Layout

		MATRIX TECNOLOGIA IND. E COM. LTDA.		
				UNIT mm
TOLERANCE: ±0.25		2.0mm MCT DUAL ROW H=1,5mm 180°		APP. BY
		MATL		CHK. BY
		DWG. NO.		DR. BY DIEGO