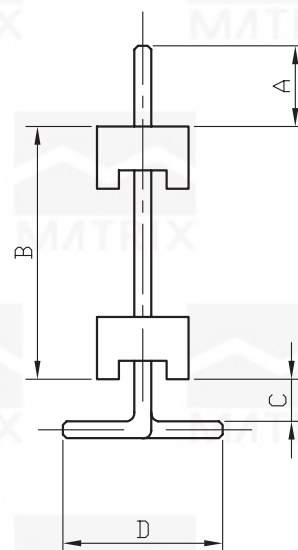
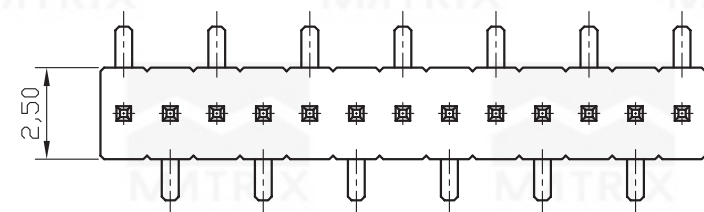
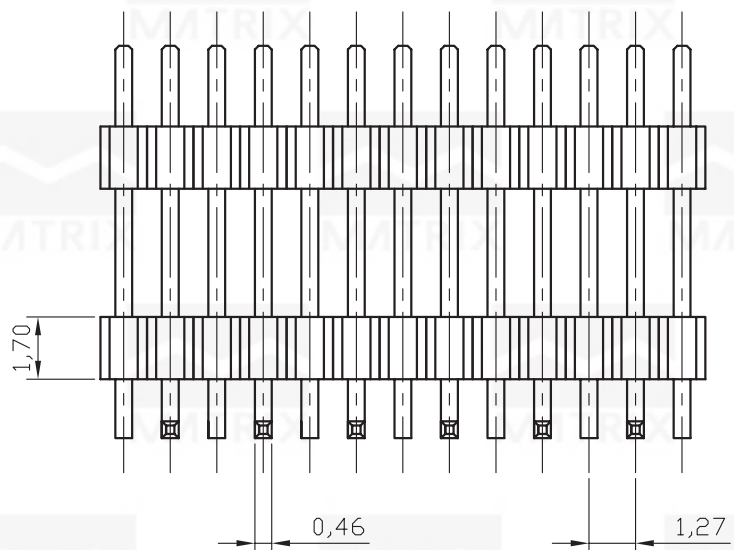


REV	ECN. NO.	APP	DATE
A	EDIÇÃO INICIAL		



**HOW TO ORDER:**  
**MCT-[ ]-[S]-[R]-[ ]-[ ]-SMD-1,27-P1,7-[ ]**  
**1 2 3 4 5 6**

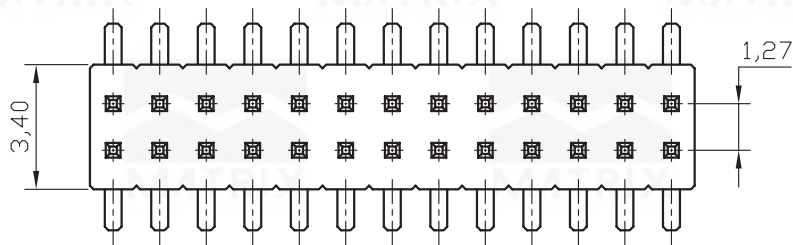
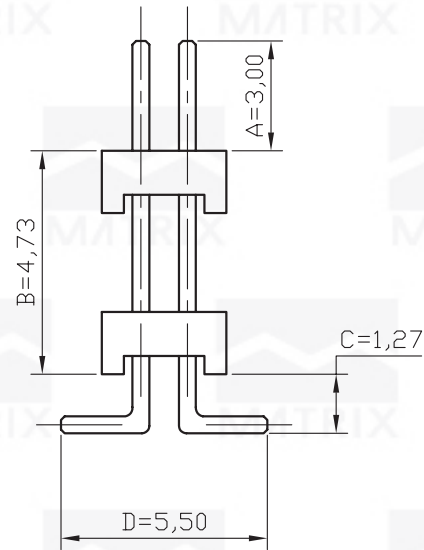
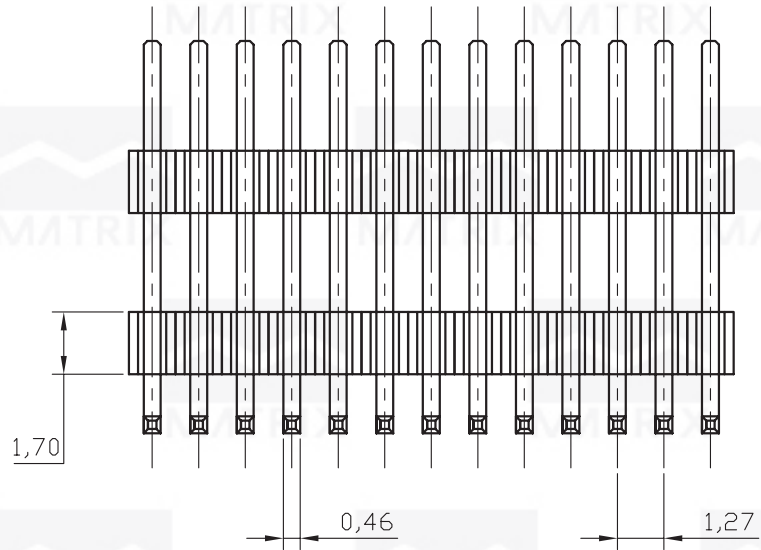
- 1- Nr. of Ways  
 Single Row: 1 to 40  
 Double Row: 2 to 80
- 2- Row Version:  
 (S)-Single Row  
 (D)-Double Row
- 3- Pin Style  
 (R)-180°
- 4- Terminal Plating:  
 (E)-Sn  
 (F)-FLASH Au  
 (A)-0,38um Au  
 (B)-0,76um Au  
 (C)-0,38um Au/Sn  
 (D)-0,76um Au/Sn
- 5- According to Customer Desing
- 6- (R) RoHS Compliant



**MATRIX TECNOLOGIA IND. E COM. LTDA.**

UNIT mm	SCALE 5:1	TITLE 1,27mm MCT HEIGHT 1,7mm SINGLE ROW 180° SMT TYPE	DATE OCTOBER 2007
TOLERANCE: ±0,25		MATL	APP. BY
		DWG. NO.	CHK. BY
			DR. BY DIEGO

REV	ECN. NO.	APP	DATE
A	EDIÇÃO INICIAL		



**HOW TO ORDER:**  
**MCT-[ ]-[D]-[R]-[ ]-S-1,27-P1,7-SMD-[ ]**

- |  |   |                          |  |                       |
|--|---|--------------------------|--|-----------------------|
| 1  | 2   | 3                        | 4  | 5                     |
| 1- Nr. of Ways<br>Single Row: 1 to 40<br>Double Row: 2 to 80 | 2- Row Version:<br>(S)-Single Row<br>(D)-Double Row | 3- Pin Style<br>(R)-180° | 4- Terminal Plating:<br>(E)-Sn<br>(F)-FLASH Au<br>(A)-0,38um Au<br>(B)-0,76um Au<br>(C)-0,38um Au/Sn<br>(D)-0,76um Au/Sn | 5- (R) RoHS Compliant |



**MATRIX TECNOLOGIA IND. E COM. LTDA.**

UNIT mm	SCALE 5:1	TITLE 1,27mm MCT HEIGHT 1,7mm DOUBLE ROW 180° SMT TYPE	DATE OCTOBER 2007
TOLERANCE: ±0.25		MATL	APP. BY
		DWG. NO.	CHK. BY
			DR. BY DIEGO