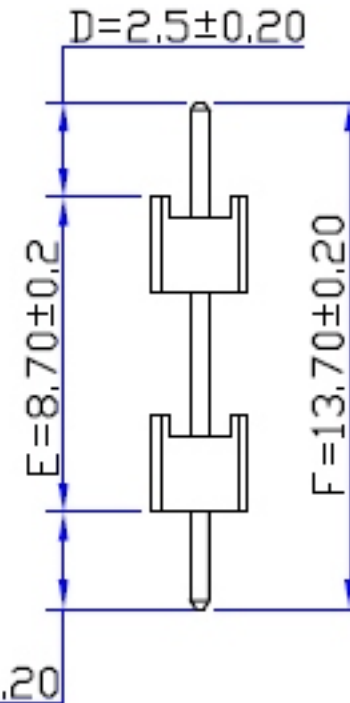
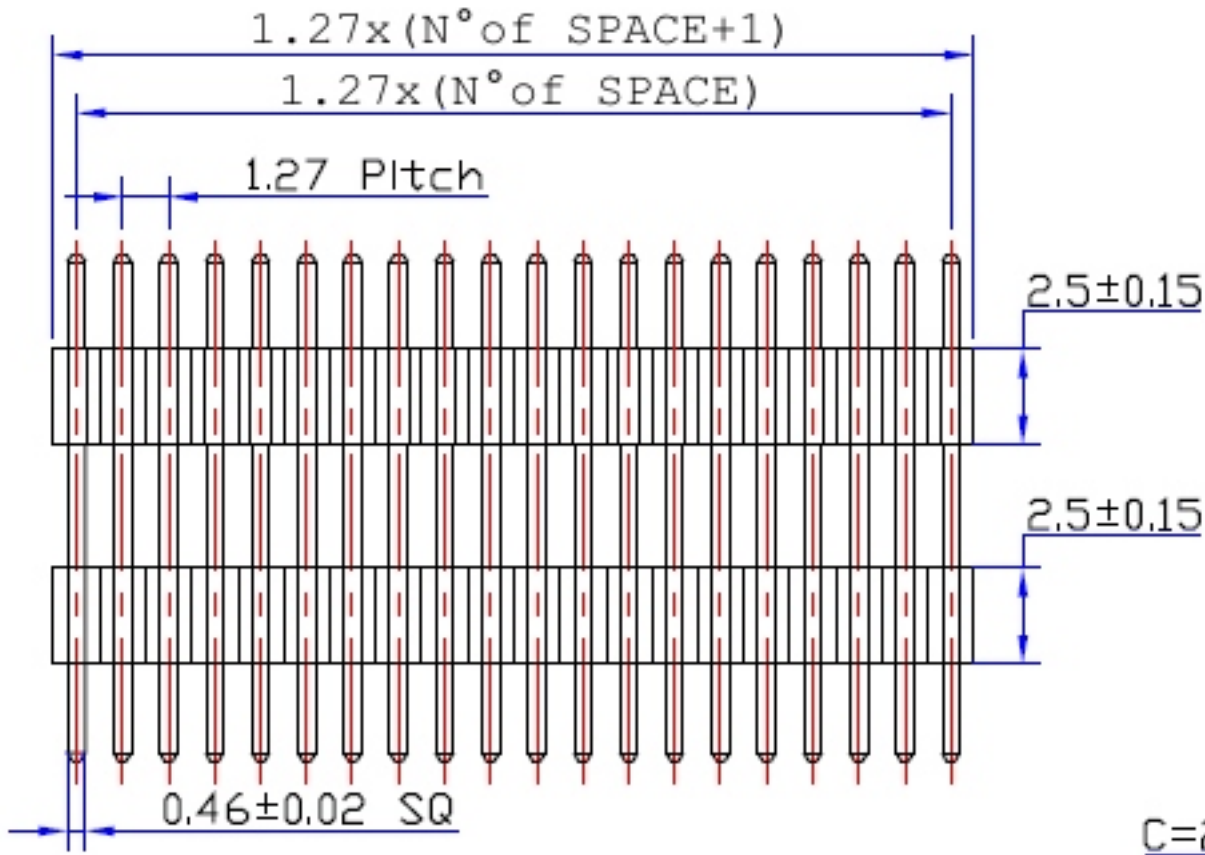
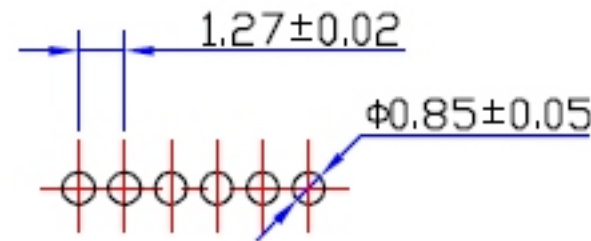


REV	ECN. NO.	APP	DATE
A	EDIÇÃO INICIAL		



SPECIFICATIONS

Current Rating: 1 Amps
 Dielectric Withstanding: AC 500V
 Operating Temperature: -40°C to +105°C
 Max Processing Temp: 230° for 30~60 seconds
 (260° for 10 seconds)



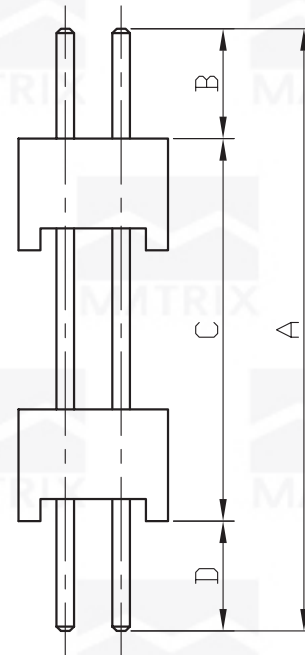
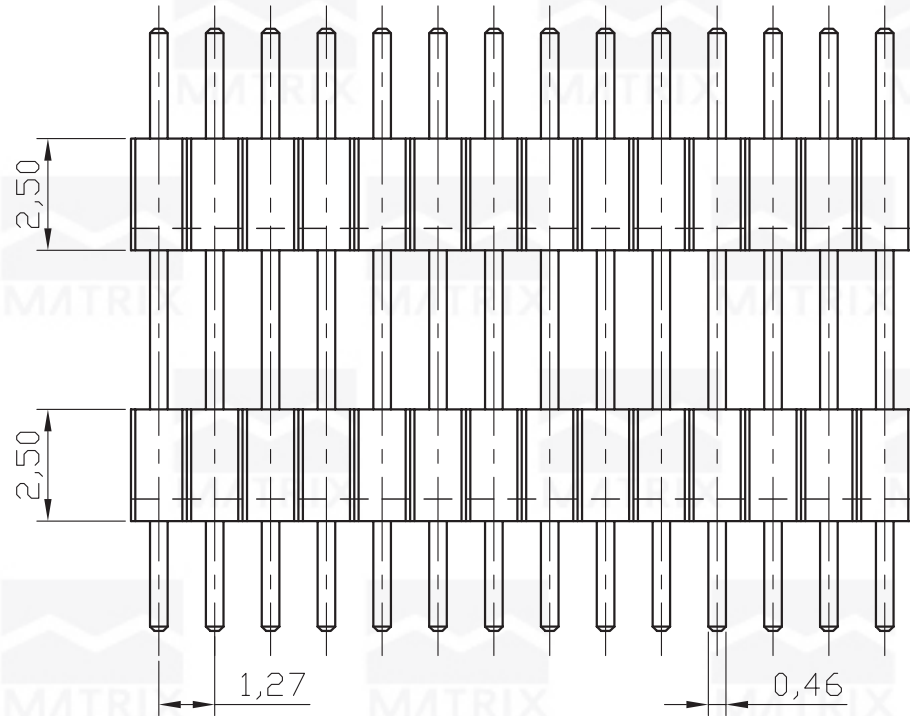
P.C.Board Layout

HOW TO ORDER:
MCT-[]-[S]-[]-[]-S-1.27-P2.5-[]
 1 2 3 4 5

- 1- Nr. of Ways
Single Row: 1 to 40
- 2- Row Version:
(S)-Single Row
- 3- Pin Style
(N)-90°
(R)-180°
- 4- Terminal Plating:
(E)-Sn
(F)-FLASH Au
(A)-0,38um Au
(B)-0,76um Au
(C)-0,38um Au/Sn
(D)-0,76um Au/Sn
- 5- (R) RoHS Compliant

		MATRIX TECNOLOGIA IND. E COM. LTDA.	
UNIT mm	SCALE	TITLE 1.27mm MCT H=2.5mm 180° SINGLE ROW	DATE SEPTEMBER 2007
TOLERANCE: ±0.25			APP. BY
		MATL	CHK. BY
		DWG. NO.	DR. BY DIEGO

REV	ECN. NO.	APP	DATE
A	EDIÇÃO INICIAL		



SPECIFICATIONS

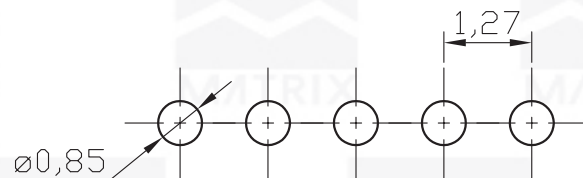
Current Rating: 1Amps
 Dielectric Withstanding: AC 500V
 Operating Temperature: -40°C to 105°C

MATERIAL

Contact: Brass
 Insulator Material: Nylon 6T
 Color: Black

HOW TO ORDER:
MCT-[]-[D]-[R]-[]-S-1,27-P2,5-[]
1 2 3 4 5

- 1- Nr. of Ways
 Single Row: 1 to 40
 Double Row: 2 to 80
- 2- Row Version:
 (S)-Single Row
 (D)-Double Row
- 3- Pin Style
 (R)-180°
 (N)-90°
- 4- Terminal Plating:
 (E)-Sn
 (F)-FLASH Au
 (A)-0,38um Au
 (B)-0,76um Au
 (C)-0,38um Au/Sn
 (D)-0,76um Au/Sn
- 5- According to Customer Design
- 6- (R) RoHS Compliant



P.C.B. LAYOUT



MATRIX TECNOLOGIA IND. E COM. LTDA.

UNIT mm	SCALE 6:1	TITLE 1,27mm MCT HEIGHT 2,5mm DOUBLE ROW 180°	DATE OCTOBER 2007
TOLERANCE: ±0.25			APP. BY
		MATL	CHK. BY
		DWG. NO.	DR. BY DIEGO