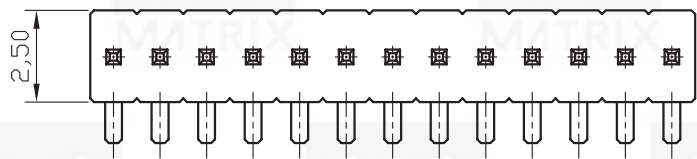
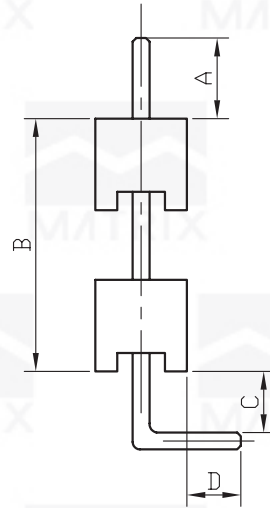
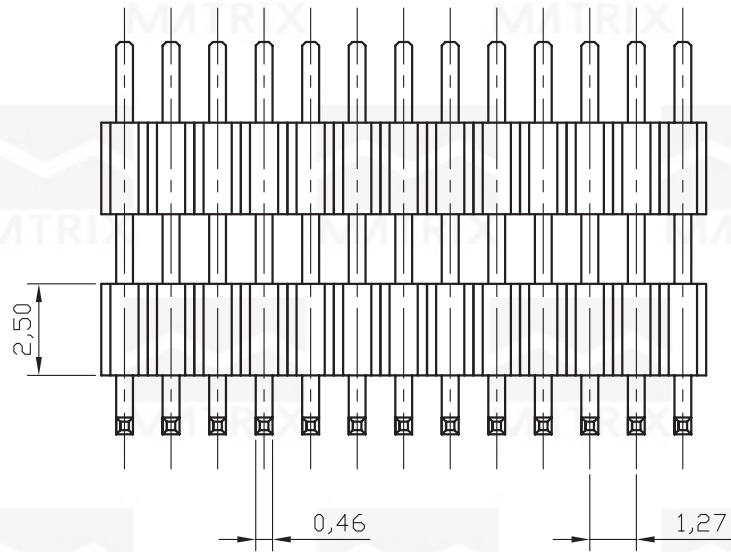


REV	ECN. NO.	APP	DATE
A	EDIÇÃO INICIAL		



HOW TO ORDER:
MCT-[]-[S]-[N]-[]-[]-1,27-[]
1 2 3 4 5 6

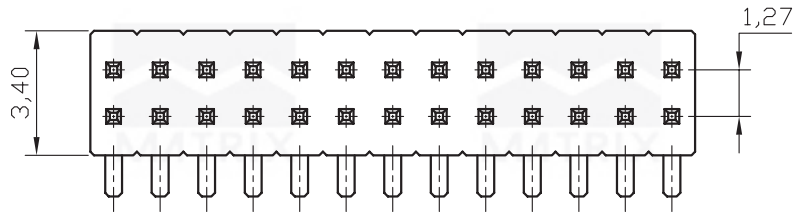
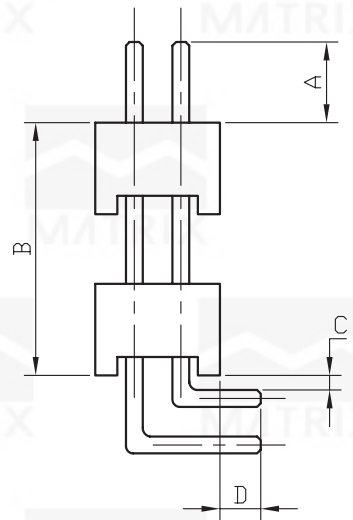
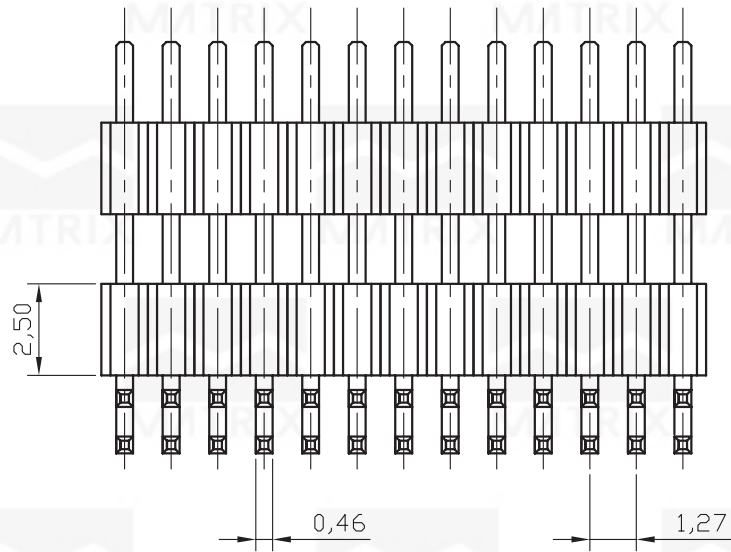
- 1- Nr. of Ways
 Single Row: 1 to 40
 Double Row: 2 to 80
- 2- Row Version:
 (S)-Single Row
 (D)-Double Row
- 3- Pin Style
 (R)-180°
 (N)-90°
- 4- Terminal Plating:
 (E)-Sn
 (F)-FLASH Au
 (A)-0,38um Au
 (B)-0,76um Au
 (C)-0,38um Au/Sn
 (D)-0,76um Au/Sn
- 5- According to Customer Desing
- 6- (R) RoHS Compliant



MATRIX TECNOLOGIA IND. E COM. LTDA.

UNIT mm	SCALE 5:1	TITLE 1,27mm MCT HEIGHT 2,5mm 90° DOUBLE ROW	DATE OCTOBER 2007
TOLERANCE: ±0.25			APP. BY
		MATL	CHK. BY
		DWG. NO.	DR. BY DIEGO

REV	ECN. NO.	APP	DATE
A	EDIÇÃO INICIAL		



HOW TO ORDER:
MCT-[]-[D]-[N]-[]-[]-1,27-[]
1 2 3 4 5 6

- | | |
|--|--|
| 1- Nr. of Ways
Single Row: 1 to 40
Double Row: 2 to 80 | 4- Terminal Plating:
(E)-Sn
(F)-FLASH Au
(A)-0,38um Au
(B)-0,76um Au
(C)-0,38um Au/Sn
(D)-0,76um Au/Sn |
| 2- Row Version:
(S)-Single Row
(D)-Double Row | 5- According to Costumer Design |
| 3- Pin Style
(R)-180°
(N)-90° | 6- (R) RoHS Compliant |



MATRIX TECNOLOGIA IND. E COM. LTDA.

UNIT mm	SCALE 5:1	TITLE 1,27mm MCT HEIGHT 2,5mm 90° DOUBLE ROW	DATE OCTOBER 2007
TOLERANCE: ±0.25			APP. BY
		MATL	CHK. BY
		DWG. NO.	DR. BY DIEGO