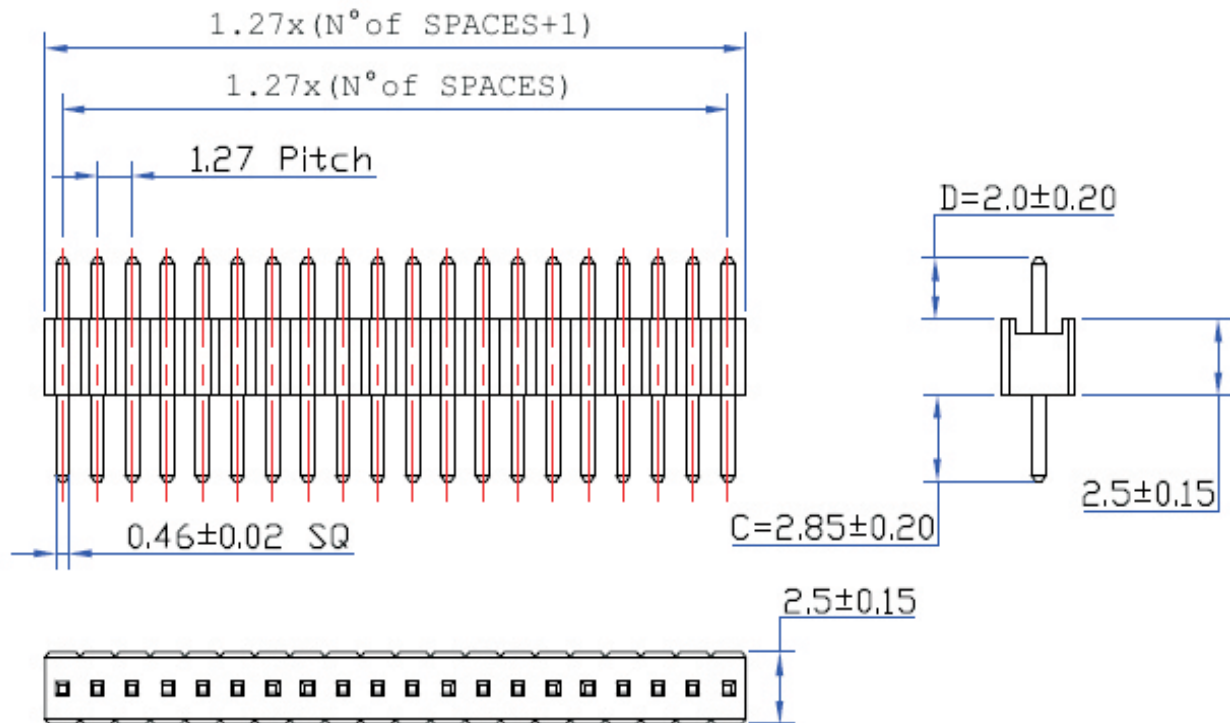


REV	ECN. NO.	APP	DATE
A	EDIÇÃO INICIAL		

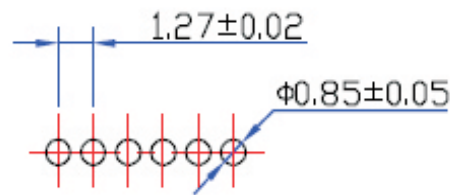


SPECIFICATIONS

Current Rating: 1 Amps
 Dielectric Withstanding: AC 500V
 Operating Temperature: -40°C to +105°C
 Max Processing Temp.: 230° for 30~60 seconds
 (260° for 10 seconds)

HOW TO ORDER: PIN[][S][R][][S][E][K][][R] 1 2 3 4 5 6 7 8

- | | |
|--|----------------------------------|
| 1- Nr. of Ways
Single Row: 1 to 40 | 5- Pitch:
(E)-1,27mm x 1,27mm |
| 2- Row Version:
(S)-Single Row | 6- Profile:
(K)-2,50mm |
| 3- Pin Style
(N)-90°
(R)-180° | 7- Options:
(T)-Tube Packing |
| 4- Terminal Plating:
(E)-Sn
(D)-FLASH Au
(F)-0,38um Au
(G)-0,76um Au
(C)-0,38um Au/Sn
(H)-0,76um Au/Sn | 8- (R) RoHS Compliant |



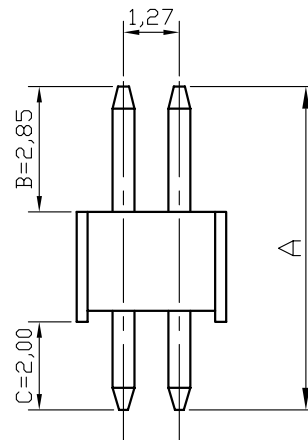
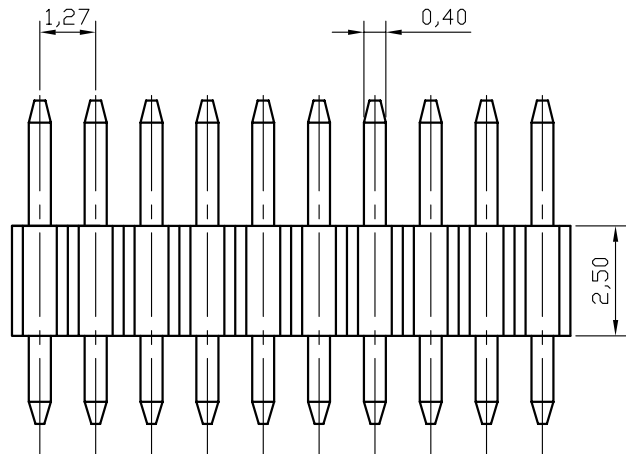
P.C.Board Layout



MATRIX Tecnologia Ind. e Com. Ltda.

UNIT mm	SCALE	TITLE 1.27mm PIN HEADER HEIGHT 2.5mm 180° SINGLE ROW	DATE September 2007
TOLERANCE: ±0.25			APP. BY
	MATL		CHK. BY
	DWG. NO.		DR. BY Diego

REV	ECN. NO.	APP	DATE
A	EDIÇÃO INICIAL		

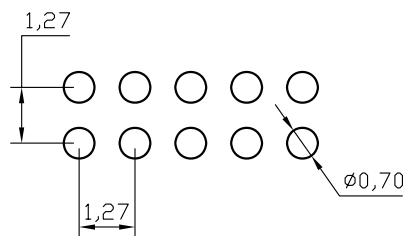
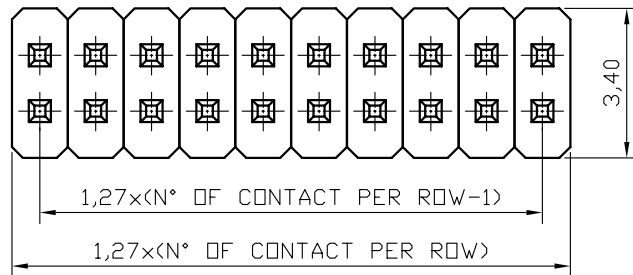


SPECIFICATIONS

Current: 1A
 Operating Temperature: -40°C to 105°C
 Contact Resistance: 20 MilliΩ Max.
 Insulation Resistance: 5000 Mega Ω Min.
 Withstanding Voltage: AC 500V RMS

MATERIALS


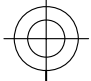
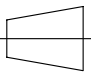
Housing: Thermoplastic UL 94V-0
 Contact: Copper Alloys



Recommended P.C.B Layout

HOW TO ORDER: PIN[][D][R][][S][E][K][][R] 1 2 3 4 5 6 7 8

- 1- Nr. of Ways
 Single Row: 1 to 50
 Double Row: 2 to 100
- 2- Row Version:
 (S)-Single Row
 (D)-Double Row
- 3- Pin Style
 (N)-90°
 (R)-180°
- 4- Terminal Plating:
 (E)-Sn
 (D)-FLASH Au
 (F)-0,38um Au
 (G)-0,76um Au
 (C)-0,38um Au/Sn
 (H)-0,76um Au/Sn
- 5- Pitch:
 (E)-1,27mm x 1,27mm
- 6-Profile:
 (K)-2,50mm
- 7-Options:
 (T)-Tube Packing
- 8-(R) RoHS Compliant

 MATRIX Tecnologia Ind. e Com. Ltda.			
UNIT mm	SCALE 6:1	TITLE 1.27mm PIN HEADER HEIGHT 2.5mm 180° DOUBLE ROW	DATE JULY 2007
TOLERANCE: ±0.25			APP. BY
 		MATL	CHK. BY
		DWG. NO.	DR. BY DIEGO